

1700-G-5

Installation (when specified)

The methods and skill involved in the installation of woodwork in large measure determine the final appearance of the project. Architectural woodwork shall be allowed to come to equilibrium on site prior to installation. A minimum of 72 hours shall be allowed for best results. Factory finished woodwork will require a week or more to acclimatize. The design, detailing and fabrication should be directed toward achieving installation with a minimum of exposed face fastening. The use of interlocking wood cleats or metal hanging clips combined with accurate furring and shimming will accomplish this. Such hanging of woodwork has the additional advantage of permitting movement that results from humidity changes or building movement.

1700-G-6

Finishing (when specified)

This section does not cover finishing. However, site conditions for finishing are rarely conducive to good results. Poor lighting, dust-laden air, and available techniques are limiting factors. In many areas woodworkers will factory finish, yielding better results than can be achieved from field finishing.

Priming and back priming are the responsibility of the general contractor unless specified otherwise.

When projects are factory finished under Section 1500, field touch-up is the responsibility of the installing contractor, and includes the filling and touch-up of exposed job-made nail or screw holes, refinishing of raw surfaces resulting from job fitting, repair of job-inflicted scratches and mars, and final cleaning of the finished surfaces. The prefinisher may be contracted to supply touch-up materials by special arrangement and agreement between the finisher and the general contractor.

1700-G-7

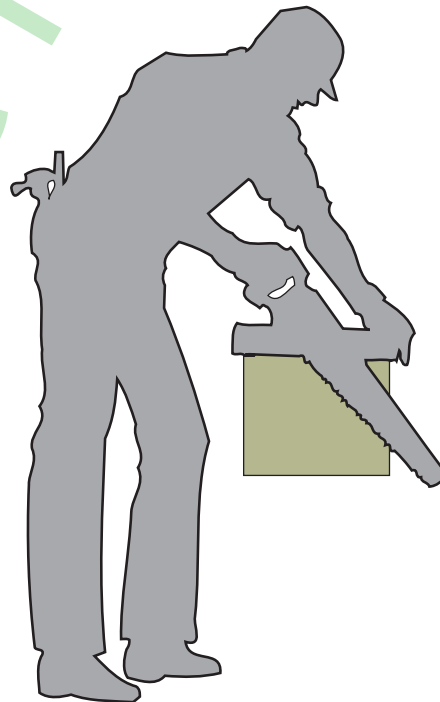
Fire-Retardant Ratings (when specified)

It is the responsibility of the specifier to research local codes and to indicate what fire-retardant rating, if any, is required for the specific items and classifications of the woodwork. (See Sections 100 and 200 regarding fire-retardant materials.)

In the absence of such a specified rating, the woodworker shall supply, and the installer shall install, unrated woodwork.

Recommendations which follow

The illustrations of Sections 1700-G-8 through G-10 do not represent the only possible, practical, or appropriate engineering solutions for the issues shown. Design professionals and woodworking professionals often work together to create innovative solutions for installation. Solutions proposed by responsible parties shall not be deemed inappropriate merely because they are not shown in the QSI. Variance from compliance with the QSI can be, and often is, granted by the design authority or owner.



1700-G-8
Hanging Cleat Recommendations

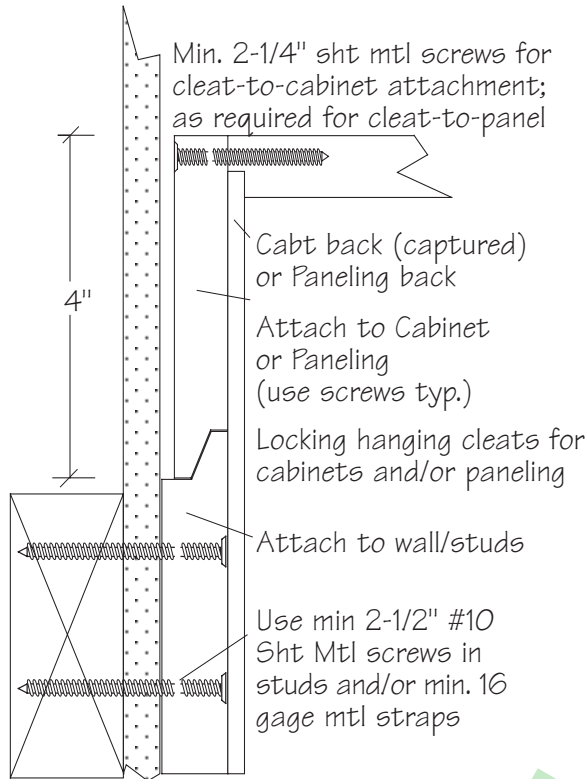


Figure 1700-01 - Cabinet or Panel Hanging

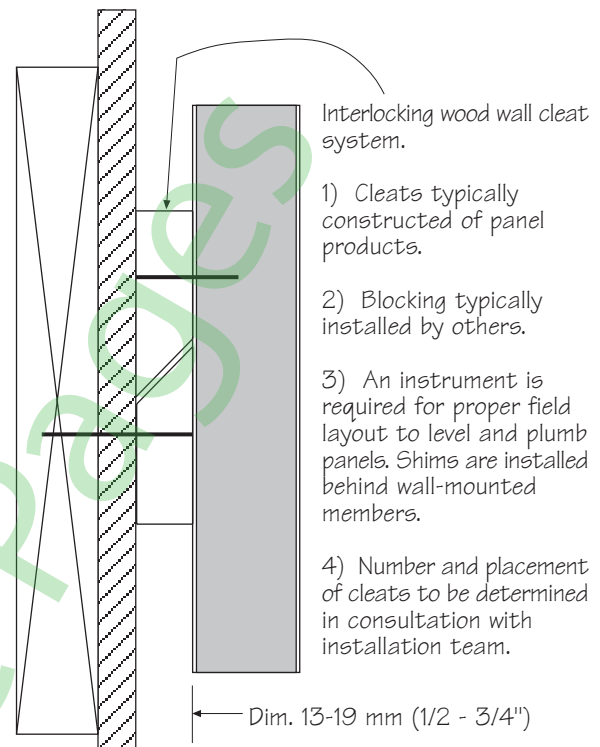


Figure 1700-03 - Wood Interlock

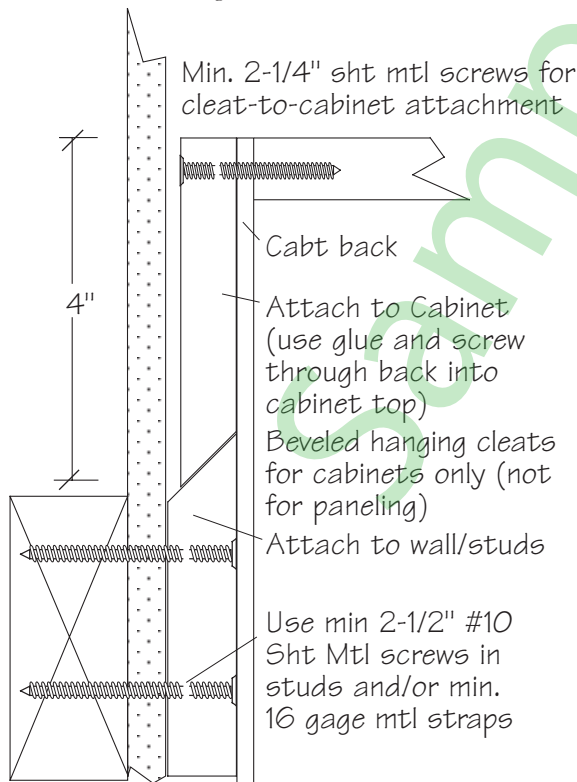


Figure 1700-02 - Cabinet Hanging

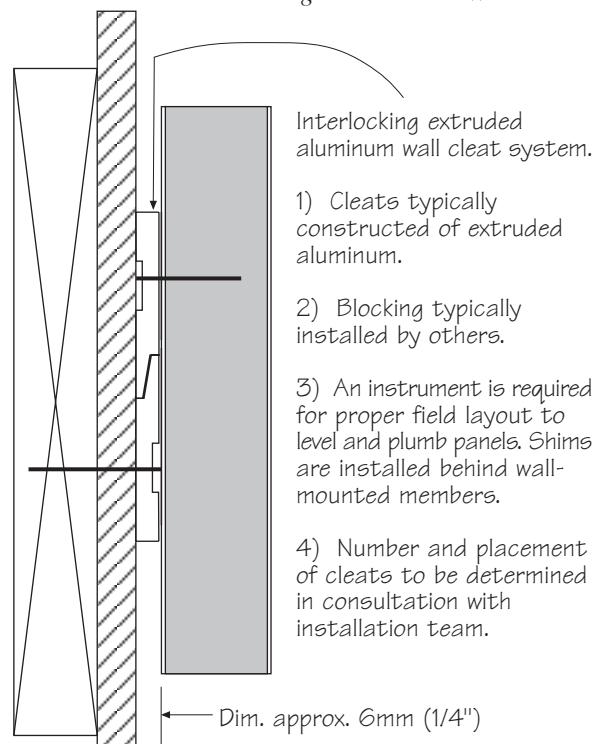


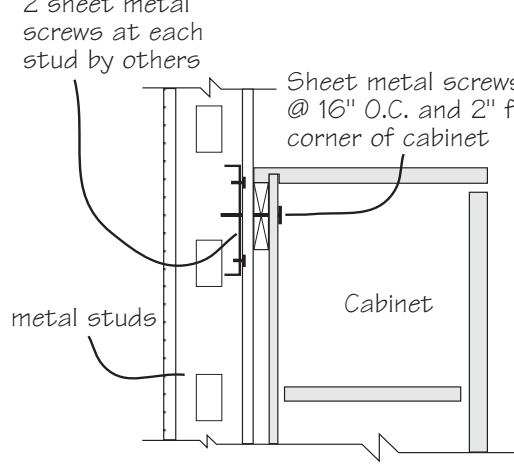
Figure 1700-04 - Aluminum Interlock

1700-G-9

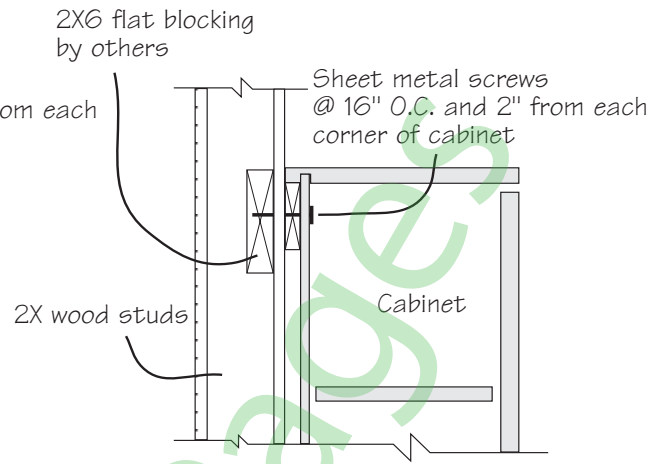
Cabinet Fastening Recommendations

6" X 16 ga. cont.
sheet metal at studs,
2 sheet metal
screws at each
stud by others

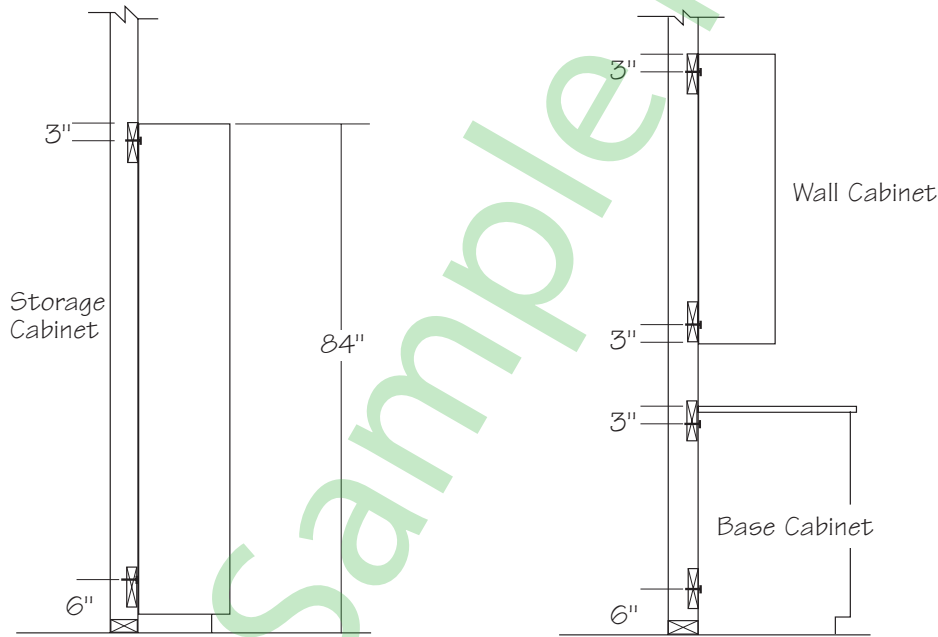
NOTE: These techniques are not approved for seismic areas.



Typical at Metal Stud Walls



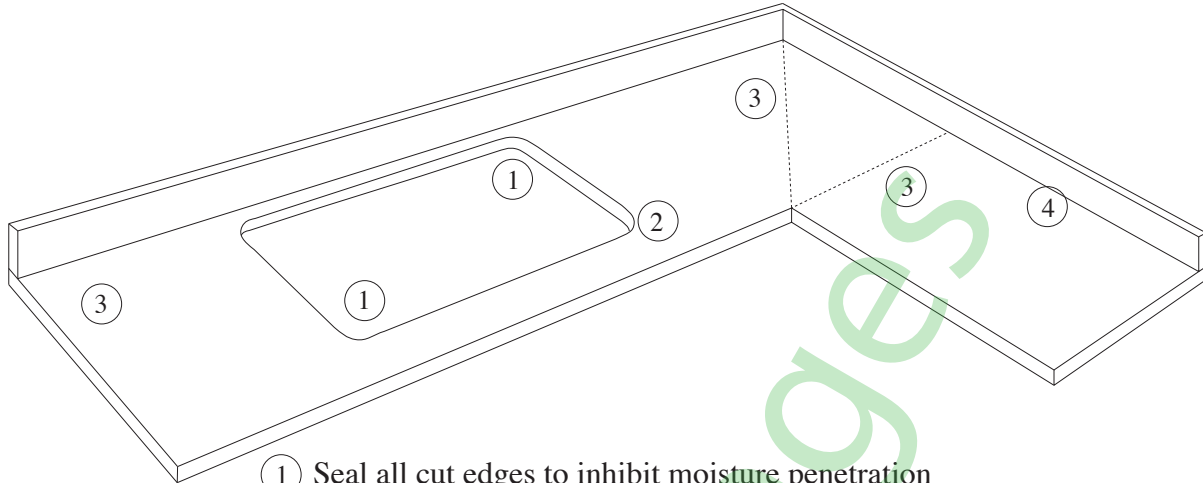
Typical at Wood Stud Walls



Typical Cabinet Fastening Details - In-wall Blocking usually by General Contractor

Figure 1700-05 - Fastening

1700-G-10
HPDL Countertop Requirements



- ① Seal all cut edges to inhibit moisture penetration
NOTE: Use of pigment in the sealant will facilitate confirmation.
- ② Radius cut outs to minimize stress fractures
- ③ Locate joints in HPDL and substrate at least 460 mm [18"] from sink, unless design criteria locates sink within this dimension of corner joint or change of direction of top. Seal joints watertight when within 1220 mm [48"] of sink cut outs for any Grade of Work.
- ④ Seal backsplash to top with caulk or silicone:
Required at fabrication when factory assembled Premium Grade
Required at installation for Premium and Custom Grade
Mill/Installer's option for Economy Grade

Figure 1700-06 - Counter Seams