

NEWS BRIEFS

Newsletter of the Architectural Woodwork Institute

STAINED BEADBOARD
CEILING, "YF."
1" @ LOCUST PEGS
WALL, VTD. ADJUSTABLE LITG.
12
7
1/4" ENCL. W/ (2)
5x5 TIMBER CLG. POS
(2) 5x5 TIMBER S. RUI'S
EXG. MASONRY CHIMNEY

What's Inside

AWI News 2-3
 Business Tools 4
 Safety Matters 5
 Chapter News 6-7
 Standards 7-8
 Sponsors 8

AWI NewsBriefs

AWI's monthly newsletter is published as a service for members to help them improve operations and grow their businesses. *NewsBriefs* is also a resource for news and information about AWI's products, programs and publications and other membership benefits and services. •

Coming Next Month

- Year in Review



NOTE: The Architectural Woodwork Institute (AWI) makes every effort to ensure that published information is accurate and current. Neither AWI, nor any content contributor, officer, or employee of AWI warrants the accuracy, reliability or timeliness of any information published in AWI News-Briefs and/or AWI e-Briefs, nor endorses any products, services or other information resources linked from AWI's editorial content and shall not be held liable for any losses caused by reliance on the accuracy, reliability or timeliness of such information. Portions of the information may be incorrect or not current. Any person or entity that relies on any information obtained from this system does so at their own risk.

In Our Highest Esteem Jeff Ebel Honored by AWI

“There are many great people in this organization, who give so much of their time and effort...and who dig way down deep to make a good idea a reality in excellence,” said AWI President Doug Carney in presenting AWI's highest honor to an individual.

“There is one individual this year who achieved all that, and more...whose efforts went beyond the norm to soar to outstanding results. That person is Jeff Ebel, Chairman of the AWI Speaker Bureau,” Carney said in presenting him with the AWI “President’s Award.”

Mr. Ebel in 2009 earned Toastmaster International's highest award of Distinguished Toastmaster. He took on the chairmanship of the AWI Speaker Bureau after selling his manufacturing company, and then continued to give of his time and successfully launched this mission-critical AWI initiative.

“There is one individual whose efforts went beyond the norm to soar to outstanding results.”

(continued on page 2)



Setting a Standard of Excellence

It's always challenging to select the best architectural woodwork projects among so many extraordinary examples featured in AWI's official journal, *Design Solutions Magazine*. How does one standout project shine brighter than other stars?

The projects of the seven AWI Manufacturing Members who were singled out for the highest levels of excellence in architectural woodwork in 2010 answer that question. Their projects exceeded the “best” among the competition for an AWI “Standard of Excellence Award” (SOE).

Among them, the “Overall” Standard of Excellence winner, Fetzer Architectural Woodwork, was honored for the firm's superlative work on Alice Tully Hall at the Julliard School of Music in New York City.

To qualify for an AWI SOE Award, all honorees also were recognized for their projects with an “Award of Excellence” in one of the quarterly editions of *Design Solutions Magazine*. The projects of seven firms were honored in the categories noted below each photo on page 4.

Overall Category

Fetzer Architectural Woodwork, Salt Lake City, UT
 Alice Tully Hall, Julliard School of Music, New York, NY
 Photographer: Iwan Baan, The Netherlands



46179 Westlake Drive, Suite 120
 Potomac Falls, VA 20165
 571.323.3636 • 571.323.3630 Fax
 www.awinet.org

(continued on page 4)

In Our Highest Esteem...

(continued from page 1)



AWI NEWS

Jeff Ebel accepts the acclaimed "President's Award" from AWI President Doug Carney.

"It was our goal as an organization to assemble a pool of qualified, motivating speakers to promote the professionalism of architectural woodworking firms and to educate and strengthen our relationship with the design community," Carney said.

Under Mr. Ebel's leadership, results were far above what was expected on two counts.

First, 50 AWI members joined the Speaker Bureau, agreeing to make presentations to a variety of professional groups. He ensured that all of these speakers underwent a proper training session and met or exceeded the American Institute of Architects' presenter quality compliance criteria before officially representing AWI.

Second, the number of AIA-approved programs delivered this year is already surpassing last year's number.

AWI recognized Mr. Ebel's outstanding service to the industry on Friday, October 29 during the AWI President's Dinner held at the 58th AWI Annual Convention in Denver, CO. The prestigious AWI "President's Award" is bestowed to a worthy "individual who has been a volunteer for many years; has served as a role model; and has shown the quality of leadership, the spirit of volunteerism, and family."

Congratulations, Mr. Ebel. Thank you for all of your efforts...your time, your talent and your persistence in bringing this program to fruition. Job well done!•

2010 AWI Convention Sponsors

Thank You for Your Support!

- Adservco Group
- Brooklyn Hardware, LLC
- Eggers Industries
- Flexible Materials
- IMA Schelling
- Kerfkore Company
- McMillin Construction
- Merrill Lynch
- Navy Island Plywood
- Pollmeier
- Waco Composites I, Ltd.
- White River Hardwoods
- Woodworking Machinery Industry Association

In addition, the annual AWI sponsors, listed on page 8 of this issue of *NewsBriefs*, deserve special thanks for their continued support throughout the year, which contributes to the quality and success of all of AWI's programs, including the annual convention. Thanks to all. •



Photo credit: St. Louis Convention & Visitors Commission

Save the Date!

MAY 11-14, 2011

**AWI SPRING PROFESSIONAL
DEVELOPMENT SEMINARS**

SHERATON ST. LOUIS CITY CENTER

ST. LOUIS, MO

AWI Members Vote for AWI Directors

All AWI Manufacturing Members received an invitation to vote for two members to the AWI Board of Directors for a two-year term beginning January 1, 2011 and ending December 31, 2012. Did you cast your vote?

Four candidates offered for consideration by the AWI Nominating Committee for consideration for the two vacancies on the Board are:



Skip Heidler
President
Heidler Hardwood Lumber Company, Inc.

Randy Jensen
Vice President
Leonard Peterson Company, Inc.

Weldon Riley
Vice President – Sales
Terrill Manufacturing Company, Inc.

Stephan Smith
President & CEO
Gaithersburg Cabinetry and Millwork

AWI Manufacturing Members were requested to complete their ballots on or before November 15, 2010 at 11:59 pm ET. The results of the election tabulated by an independent service provider, Intelliscan, will be reported in an upcoming issue of *AWI NewsBriefs*.

The opportunity to participate in your association by voting for AWI members who will represent you on the AWI Board of Directors is a benefit of membership in AWI. •

New Honorary Life Members

A number of members have been loyal supporters and committed architectural woodwork community members within the family of AWI members for many years. AWI President Doug Carney conferred Honorary Life Membership on the following individuals who have contributed exemplary service to the association, its' members, and AWI's Mission:

- Bruce Cody**, Architectural Wood
- Paul Fetzer**, Fetzer Architectural Woodwork
- Wendell Ellsworth**, Algoma Hardwoods
- Mickey McCoy**, O. B. Williams Company

Congratulations and thanks for your service to the architectural woodwork industry. •

New AWI Members

Manufacturing

Architectural Casework & Millwork, Inc.

Gloucester, MA

Bergan Architectural Woodworking

Middletown, CT

Diversified Millwork, Inc.

Hammonton, NJ

Harden Cabinets, LLC

Denton, TX

House of Cabinetry, Inc.

Dothan, AL

J. Petrocelli Contracting, Inc.

Ronkonkoma, NY

MMI of Mississippi

Hazlehurst, MS

Southern Millwork, Inc.

Tulsa, OK

Vass Incorporated

Denver, CO

Suppliers

Bozovich Timber Products, Inc.

Evergreen, AL

Capstone Alliance Partners, LLC

Beaverton, OR

Federated Insurance

Owatonna, MN

Vance Publishing Corporation

Lincolnshire, IL •

Dues Declarations Due in November

All AWI Manufacturing and Supplier Members should report their gross annual sales when requested by AWI this month. Your annual membership dues for 2011 will be based on your company's gross annual sales. Dues invoices for 2011 will be sent on December 1, 2010 and will reflect the data AWI has on file. Thank you for your cooperation and continued support. •



Setting a Standard of Excellence... (continued from page 1)

2010 AWI STANDARD OF EXCELLENCE HONOREES



Health Care Category

Architectural Woodwork Corporation, St. Louis, MO;
St. John's Mercy Heart and Vascular Hospital, St. Louis, MO;
Photographer: Debbie Franke, St. Louis, MO



Residential Category

Art of Woodwork & Design Charleston, LLC, Charleston, SC; Potts' residence,
Daniel Island, SC; Photographer: Warren H. Lieb, Mt. Pleasant, SC



Hospitality Category

Montbleau and Associates, Inc., San Diego, CA; Resort at
Pelican Hill, Newport Beach, CA; Photographer: The Irvine
Company Resort Properties, Newport Beach, CA

“ Your projects exemplify the best work among our community of architectural woodworkers. ”



Corporate Office Category

Low Country Case & Millwork, Inc., Ladson, SC;
The Mike Long Executive Suite, Beaufort, SC;
Photographer: Pamela Brooks, Mt. Pleasant, SC



Public Facility Category

(Manufacturing) Stephenson Millwork Company, Inc.,
Wilson, NC; (Installation) Craftsmanship Unlimited,
Youngsville, NC; Raleigh Convention Center, NC;
Photographer: Brian Gassel, Atlanta, GA



Worship Category

Lange Brothers Woodwork Company, Inc., Milwaukee, WI;
Emanu-El B'ne Jeshurun Synagogue, Fox Point, WI;
Photographer: Phillip Katz, Mequon, WI

BUSINESS TOOLS

Congratulations to all the honorees for their accomplishments! Your projects exemplify the best work among our community of architectural woodworkers and are excellent examples of the quality and professionalism found in our industry. Keep up the good work as “ambassadors” of fine architectural millwork fabricated according to the *Architectural Woodwork Standards*.

Design Solutions is circulated to designers and architects quarterly to illustrate the quality of the work performed by members of AWI. The magazine also includes a listing of all AWI Manufacturing Members in the back of each issue, and identifies those that are participants in the AWI Quality Certification Program (AWI QCP).

The awards were presented by AWI Past President (1993-1994) Joe Sorrelli and his wife Alice on October 28 during the AWI Awards of Excellence Breakfast held during the 58th AWI Annual Convention in Denver, CO. •

Safety: A Core Value AWI Honors 55 Members

SAFETY MATTERS

Fifty-five AWI Manufacturing Members were honored for their commitment to safe working conditions and recognized with safety awards on October 29 at the AWI/CNA Safety Awards Luncheon held during the 58th AWI Annual Convention in Denver, CO. AWI Insurance and Safety Committee Chairman Denny Milstein and CNA's Shari Falkenburg announced the winners of this year's three safety awards, including "Best Safety Achievement."

Four AWI Manufacturing Members have been singled out for the "Best Safety Achievement Award" for their business size and hours worked. Congratulations to the following companies that have shown exemplary practices that put the safety of their employees first and established safety as a core value and goal of their companies.

Best Safety Achievement Award

Jensen's Architectural Woodwork, Inc.

Less than 10,000 hours

Commercial Millworks, Inc.

10,000 to 19,999 hours

RCS Millwork, L.C.

20,000 to 99,999 hours

Bernhard Woodwork, Ltd.

more than 100,000 hours

Each also received a "Zero Lost Time Accident Achievement Award" in their categories. In addition, Commercial Millworks, Inc., RCS Millwork, L.C. and Bernhard Woodwork, Ltd. each received a "Safety Improvement Recognition Award."



FIFTY-FIVE AWI Manufacturing Members were honored and recognized with safety awards.

Zero Lost Time Accident Achievement Award

Less than 10,000 Hours

Woodtronics, Inc.
YFI Millworks

10,000 to 19,999 Hours

Jaynes Structures, Inc.
Stanton & Stanton, Inc.
Sunray Construction, Inc.
Volpe Millwork, Inc.

20,000 to 99,999 Hours

Architectural Wood
Barsanti Woodwork Corporation
Cabinets of the Carolinas, Inc. *
CKC Manufacturing, Inc.
Classic Millwork & Products, Inc.
Classic Woodworking, Inc.
Cohen Architectural Woodworking, LLC
CRC-Mastercraft, Inc. *
D. T. Woodcrafters Corporation
Excel Millwork & Moulding, Inc.
Fabrication Specialists, Inc. *
Federal Millwork Corporation
Gleason Woodwork, Inc. *
Imperial Casework, Inc.
Jefferson Millwork & Design
Jutras Woodworking, Inc. *
Luttrell Architectural Woodworks, Inc.
Lyndan, Inc. *
Market Contractors, Ltd. *
Mass Cabinets, Inc.
Mock Woodworking Company
Precision Millwork & Plastics, Inc.
Riverside Construction Services, Inc. *

Rowland Woodworking, Inc.
Salina Planing Mill, Inc.
Siewert Cabinet & Fixture Manufacturing, Inc. *
Somerset Wood Products Company
The Anthony Galluzzo Corporation
Wend-Wood, Inc.
Windsor Architectural Woodworking
World of Wood, Ltd. *

More than 100,000 Hours

Diversified Woodcrafts, Inc.
Hollywood Woodwork, Inc. *
JK Concepts, Inc. *
Legere Group, Ltd. *
MEDCO Construction, LLC *
Thornwood Furniture Manufacturing *
Wilkie Sanderson
Wood Systems, Inc.

Companies marked with an * also were honored with a "Safety Improvement Recognition Award."

Safety Improvement Recognition Award

20,000 to 99,999 Hours

Lange Brothers Woodwork Company, Inc.
Specialty Woodworks, Inc.

More than 100,000 Hours

Fetzer Architectural Woodwork
Mark Richey Woodworking
Westmark Products, Inc.
Zepsa Architectural Woodwork



Importance of Recognition

The AWI Manufacturing Members were honored for best practices as exemplified by their safety records. Safety on the jobsite and in the plant requires a dedicated team effort. All members of each company's team should feel proud of their accomplishments. The honorees are encouraged to use the awards for marketing their safety records in the industry. •

Congratulations Chapters: Job Well Done!



CHAPTER NEWS

“**C**hapters are the lifeblood of our association, and for many members they provide local education and networking opportunities,” AWI President Doug Carney said as he welcomed chapter representatives and association members to the Chapter Celebration Lunch on October 29, 2010.

“The Distinguished Chapter Program has succeeded in creating best practices for chapters, challenging each to excel in providing quality programs, products and services to local members and industry partners,” President Carney announced. He recognized many chapters for their accomplishments, including three that made long strides forward on the “comeback trail”: Chesapeake and Potomac, Virginia and the Louisiana / Mississippi chapters.

Texas Chapter President Craig Montgomery accepts a beautiful trophy from AWI President Doug Carney recognizing the Texas group as “2010 Chapter of the Year.”

Chapter of the Year

One AWI chapter excelled in all areas. President Doug Carney named the Texas Chapter as “2010 Chapter of the Year.”

In announcing the winner, President Carney said the award was bestowed on “a chapter where its member’s determination and tireless efforts have provided the impetus to serve effectively, maintain membership and organize meaningful programs.”

AWI congratulates all on a job well done.

Chapter Champions

The following chapter presidents were announced recognizing their assistance with helping their chapter achieve “distinguished” status for two consecutive years:

Mike Sarno, New England Chapter
Kristine Cox, Carolinas Chapter
Jim Buege, Wisconsin Chapter
Garry Astles,

Central Pennsylvania Chapter
Paul Kelly, Chicago Chapter
Bruce Robb, Georgia Chapter

Distinguished Chapters

Carolinas
Chicago
Florida
Georgia
Great Lakes
Heart of America
New England
New Jersey
Ohio Valley
Central Pennsylvania
Texas
Washington State
Wisconsin

Thirteen out of 25 chapters (52%) achieved “distinguished” status in 2010. Congratulations!



Best Chapter Annual Report

First Place – Florida Chapter
Second Place – Carolinas Chapter

Best Chapter Newsletter

First Place – Carolinas Chapter
Second Place – Wisconsin Chapter
Honorable Mention – Chicago Chapter

Best Chapter Web Sites

First Place – Carolinas Chapter
Second Place – Ohio Valley Chapter
Honorable Mention – Georgia and Great Lakes Chapters

“The winners exhibited a well organized and clear mission, including a wide variety of topics for members, did an excellent job of promoting members, kept an updated calendar posted, and were technically savvy,” President Carney said. He also recognized that all chapter Web sites had greatly improved in 2010.

AWI Honors Kristine Cox As Outstanding Chapter Leader

During the AWI Chapter Celebration Lunch on October 29, AWI President Doug Carney acknowledged one of AWI's significant accomplishments – connecting members. "There was only one reason we met that challenge," Carney said, "the AWI chapters and chapter officers." Volunteer leaders of the chapters have a formidable job leading these vital organizations in addition to maintaining their full-time jobs in the industry. Yet, they continue to give back to the industry, succeeding on multiple levels.

This year, AWI's highest honor for chapter leadership, the "Twiellenmeier Award," was presented to Kristine Cox, President of the AWI Carolinas Chapter. "This prestigious award recognizes a chapter president who has exhibited superlative leadership and advanced the chapter's mission and accomplishments,"



Kristine Cox is honored by AWI President Doug Carney with the prestigious "Twiellenmeier Award."

AWI President Doug Carney said in making the presentation. The honors took place during the 58th AWI Annual Convention in Denver, CO.

The "Twiellenmeier Award" is named in honor of AWI Past President (1957-1958) Claude Twiellenmeier, who with his wife, Irene, founded many AWI chapters and frequently visited all association chapters.

Kristine Cox is co-owner, along with husband Jeffrey, of Rowland Woodworking, Inc. in High Point, NC. The company has been an AWI Manufacturing Member since 1993. •

STANDARDS

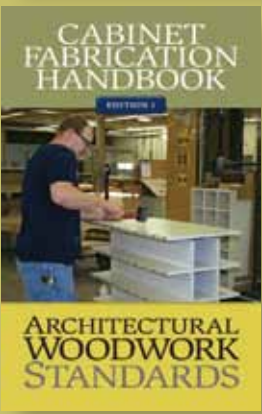
Companion Books To Architectural Woodwork Standards

As use of the *Architectural Woodwork Standards (AWS)* becomes more widespread, superceding the *Architectural Woodwork Quality Standards Illustrated*, AWI members need ready reference resources to simplify fabrication and installation of architectural woodwork according to the Standards. Make sure you have a copy of the two companion books to the *Architectural Woodwork Standards (AWS)* developed by the Joint Standards Committee.

The companion books are available at the reduced AWI member rate in the AWI Store online at www.awinet.org. Click on the "AWI Store" and login using your AWI member access codes to purchase copies at the discounted member prices.

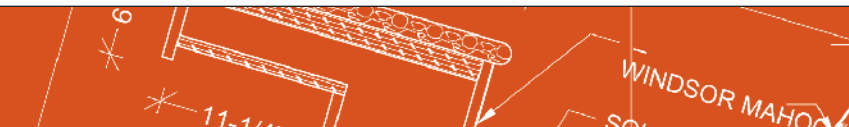


- **AWS Installation Handbook, Edition 1 (2009)**
An installation companion to the *Architectural Woodwork Standards (AWS)*.
Price: \$5.00



- **AWS Cabinet Fabrication Handbook, Edition 1 (2009)**
A cabinet fabrication companion to the *Architectural Woodwork Standards (AWS)*.
Price: \$5.00

The price of each companion handbook for non-members is \$40, available only through the AWI storefront at www.Amazon.com. •



Did You Know...about the AWS?

By Shows Leary, Alternate Member, AWI Technical Committee

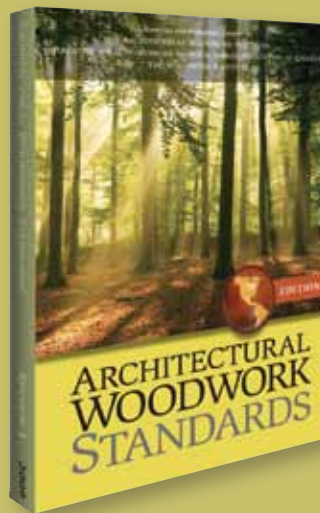
STANDARDS

Familiarity with the AWI *Architectural Woodwork Quality Standards Illustrated* (QSI) can no longer be relied on in woodwork project specifications where the *Architectural Woodwork Standards* (AWS) introduced in August 2009 supercede the QSI. Don't assume the standards are the same.

Stile and Rail Cabinet Door and Flush Door Layouts

On pages 251 and 252 of the AWS, item 1.2.19 we see a layout of typical stile and rail and flush cabinet doors. In the AWS there are a few changes to the stile and rail layout compared to the QSI, which did not address stile and rail visible veneer grain orientation.

In item 1.2.19.1.1 you can see there are two (2) types of stile and rail layouts. The elevation on the right shows the traditional layout where the doors and drawers get stiles and rails. New to the AWS is the allowance of the elevation on the left which allows for stiles and rails on the doors only while the drawers receive the flush appearance of no stiles or rails. Either layout is acceptable for all three Grades.



Stile and rail grain orientation was not addressed in the QSI and is clarified in the AWS.

Another difference is that the grain on the drawers can run horizontal if used with stiles and rails, or vertical if used in a flush manner. This applies to all three grades of Premium, Custom and Economy. As you will recall, in the QSI, page 133, item 400A-T-1, Premium Grade cabinets required vertical orientation of all grained components. Custom Grade allowed a mix of vertical and horizontal grain orientation. Stile and rail grain orientation was not addressed in the QSI and is clarified in the AWS.

Another difference between the QSI and the AWS is that for Custom Grade flush doors and drawers, the requirement is the same as for Premium Grade in that the grain for both the drawers and doors are to run vertically.

By the way, in both the QSI and the AWS the minimum width of stiles and rails is 2-1/2" wide by 3/4" thick. This can affect the visible veneer in drawer fronts so grain orientation can be important to work out on the shop drawings so the architect is clear on what to expect. •

Shows Leary has been an AWI Quality Certification Program (QCP) inspector since 1996. He has served as QCP's Regional Representative and as a member of the Quality Certification Corporation Board of Directors and Board of Appeals. He is an alternate member of the AWI Technical Committee. Contact Shows Leary at shows@showslary.com.

Please see AWI cautionary disclaimer on page 1.



2010 AWI Sponsors

AWI thanks these annual sponsors for their additional support in 2010. Their financial support helps to fund association programs and services that benefit all AWI members throughout the year. Visit www.awinet.org to contact them whenever a need arises for their services. •

Sustaining Sponsor:

stiles
Your success is our business.

Major Sponsors:

CNA

LAMIN-ART
Technical Finishes



VeneerTech
Veneer Technologies Incorporated

Level 2 Sponsors:

Chemcraft
A Great Finish is Only the Beginning



M.L. CAMPBELL
WOOD FINISHING SYSTEMS

Level 3 Sponsor:

valspar
If it matters, we're on it.

Level 4 Sponsors:

BIESSE
AMERICA

DELMAC

Template

scmgroup
north america

SHERWIN-WILLIAMS



30% PCW/55% Total Recycle