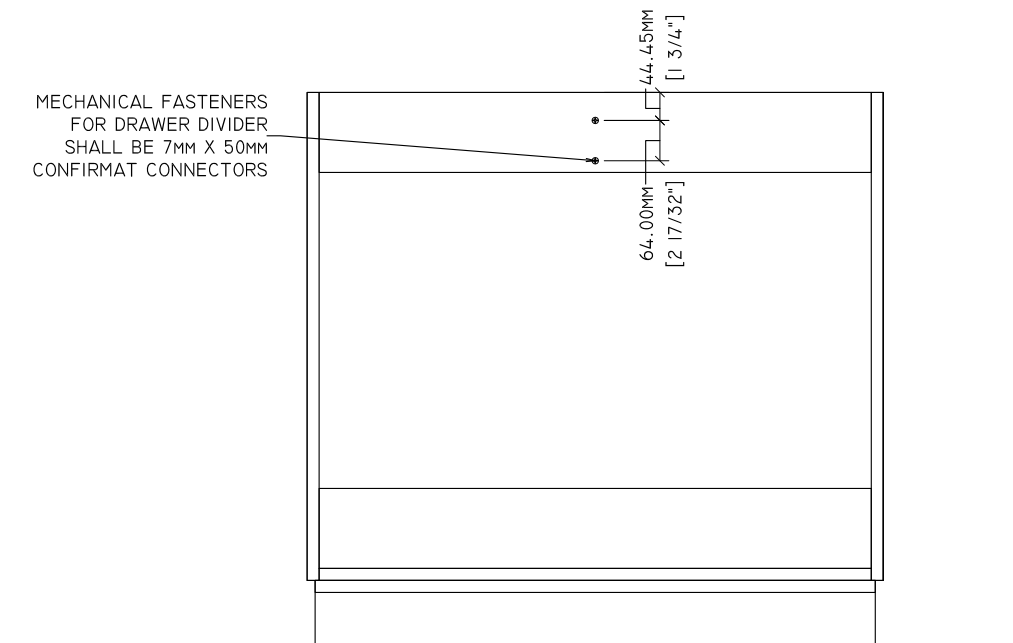
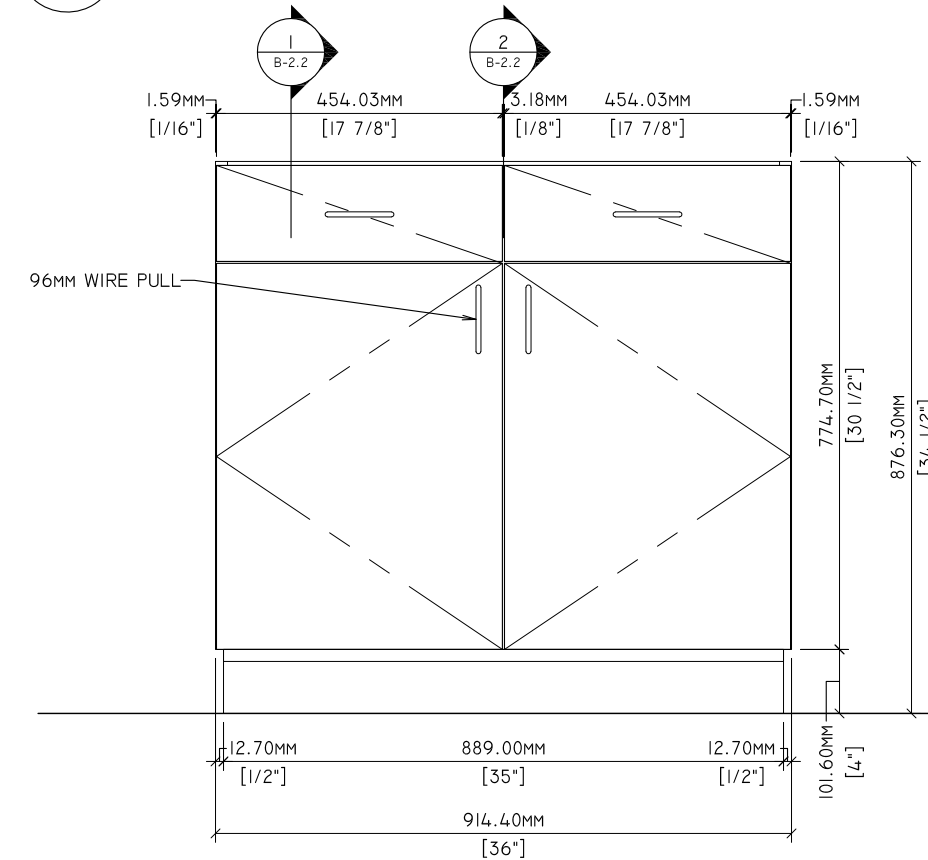
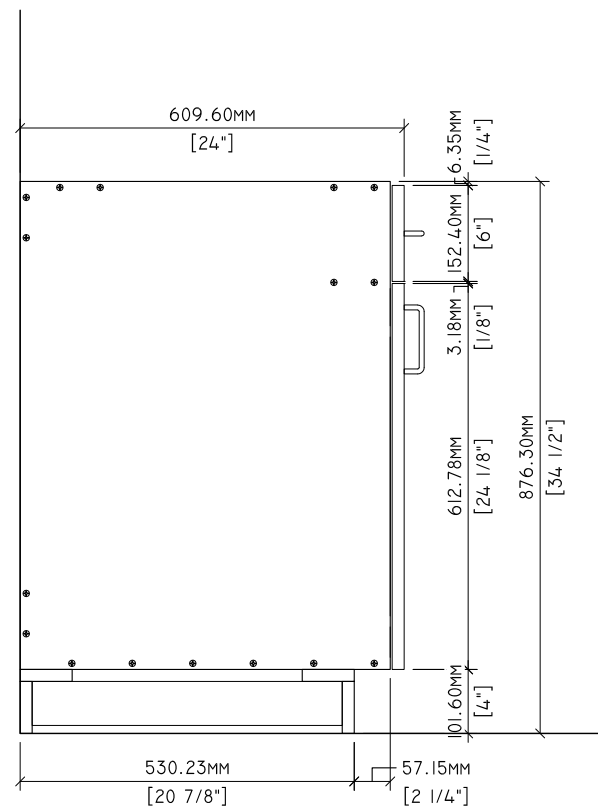
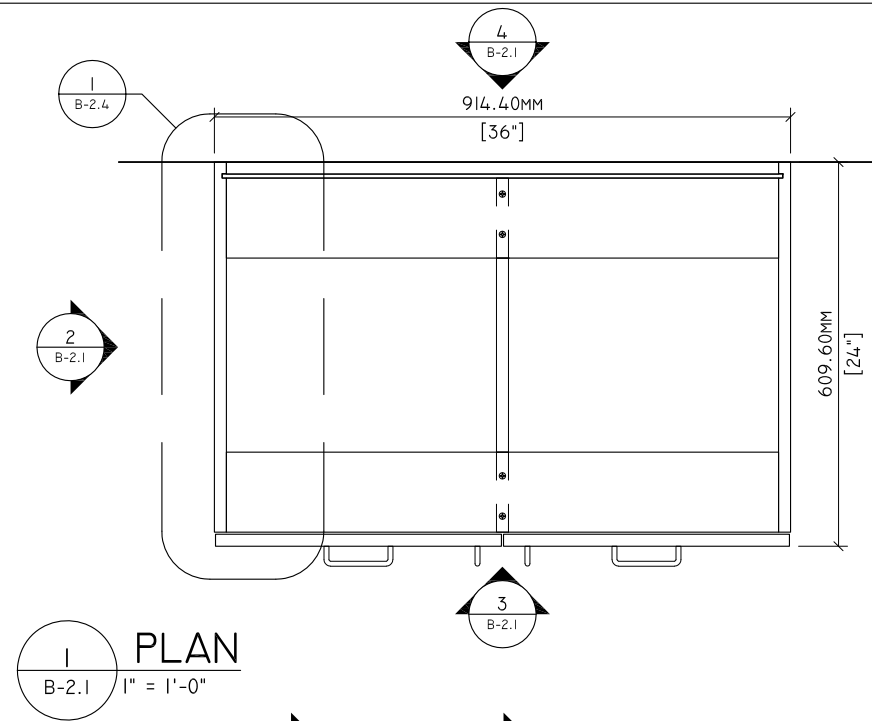
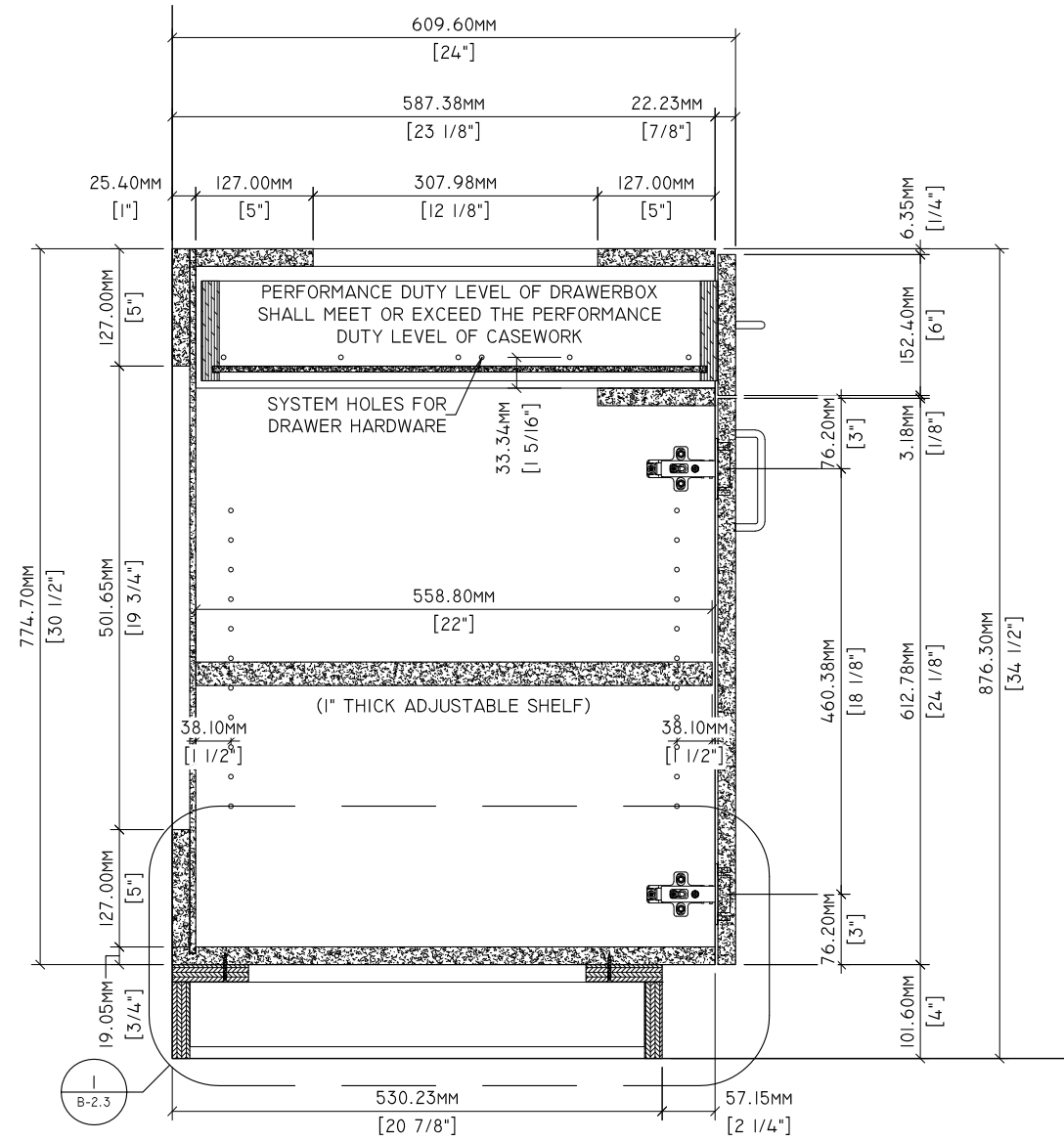


MATERIAL NOTES

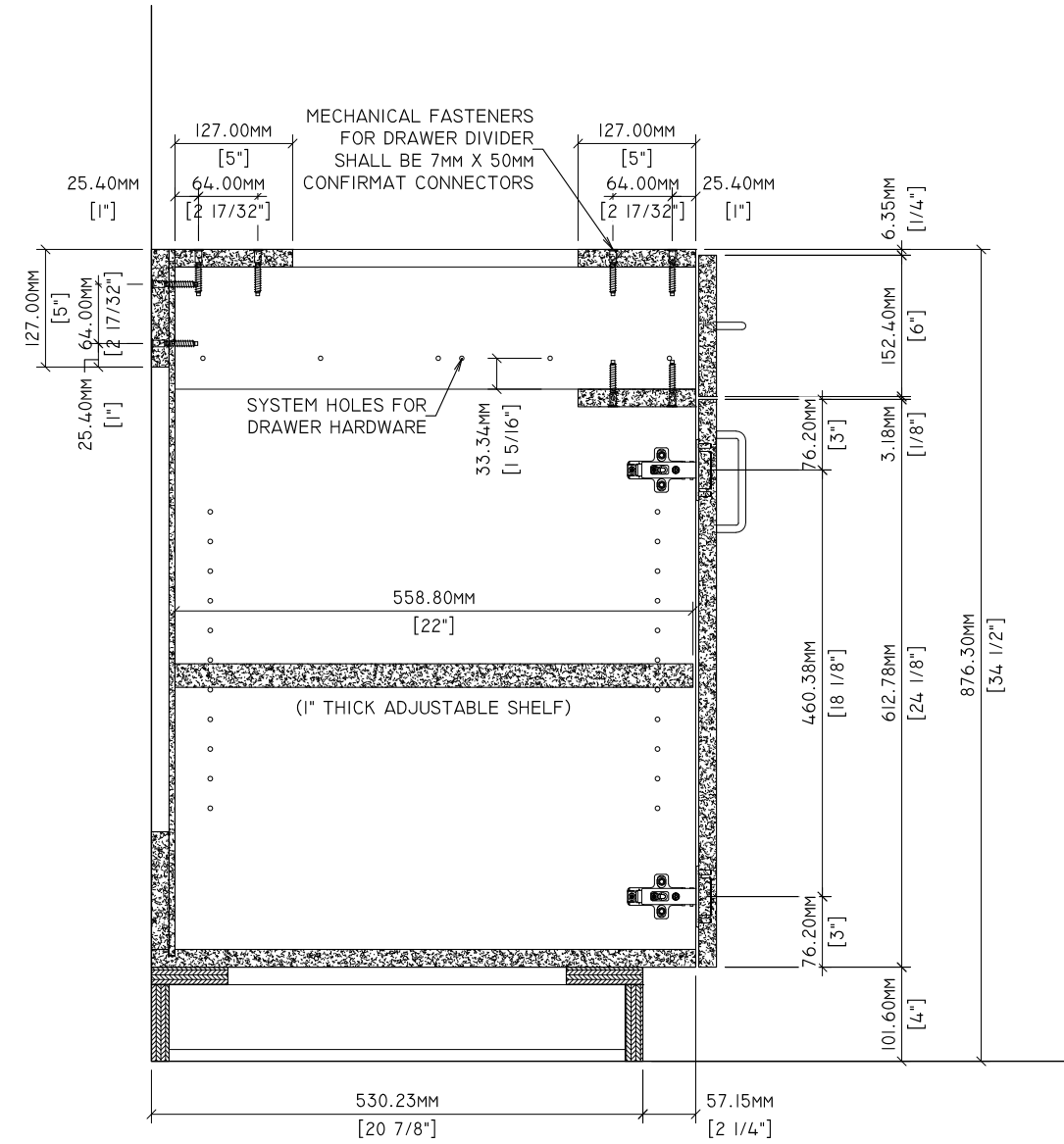
THE FOLLOWING ENGINEERING DRAWINGS ILLUSTRATE THE TESTED ENGINEERING OF CONFIRMAT CONSTRUCTION BASE CABINETS USING GRADE 130 MDF, M-2 PARTICLEBOARD, AND VENEER CORE PLYWOOD. THESE DRAWINGS DO NOT INDICATE COMPLIANCE WITH AWI STANDARD. MANUFACTURERS SHALL ACQUIRE AN OFFICIAL AWI TEST REPORT IN ORDER TO INDICATE COMPLIANCE.



Drawn By:		REVISIONS		SPECIMEN DWG. NO.:
Drawn By:	HD	△	-	B-2.1
Reviewed By:	-	△	-	JOINERY METHOD NO.: 7mm X 50mm CONFIRMAT
Revised By:	-HKM	△	- 7/7/2020	SPECIMEN MATERIAL: MDF, PB, VC
Revised By:	-	△	-	BATCH QUANTITY: -
Approved By:	-	△	-	SCALE: AS NOTED

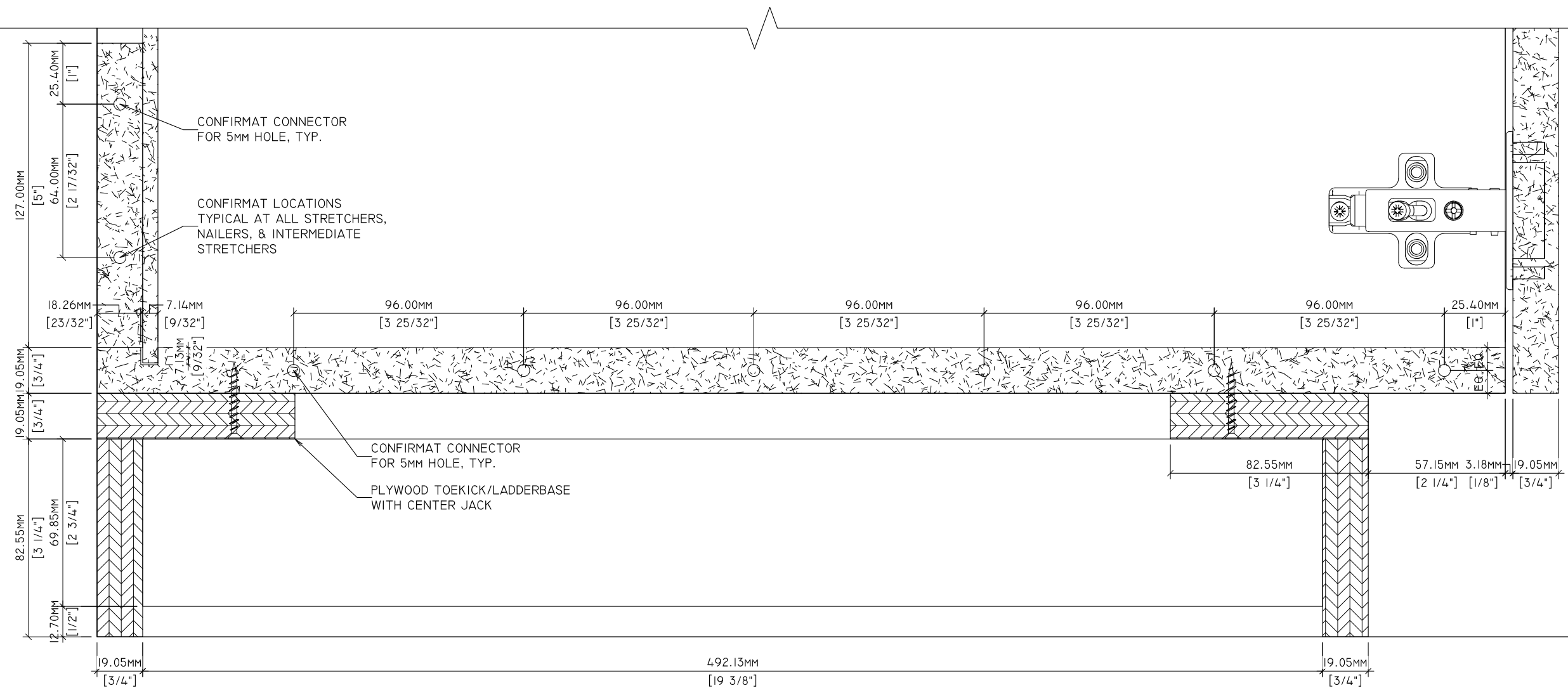


1 SECTION
B-2.2 1-1/2" = 1'-0"



2 SECTION: DRAWER DIVIDER FASTENER LOCATIONS
B-2.2 1-1/2" = 1'-0"

Drawn By:	HD	REVISIONS		SPECIMEN DWG. NO.: B-2.2
Reviewed By:	-	△1	-	JOINERY METHOD NO.: 7mm X 50mm CONFIRMAT
Revised By:	HKM	△2	- 7/7/2020	SPECIMEN MATERIAL: MDF, PB, VC
Revised By:	-	△3	-	BATCH QUANTITY: -
Approved By:	-	△4	-	SCALE: AS NOTED



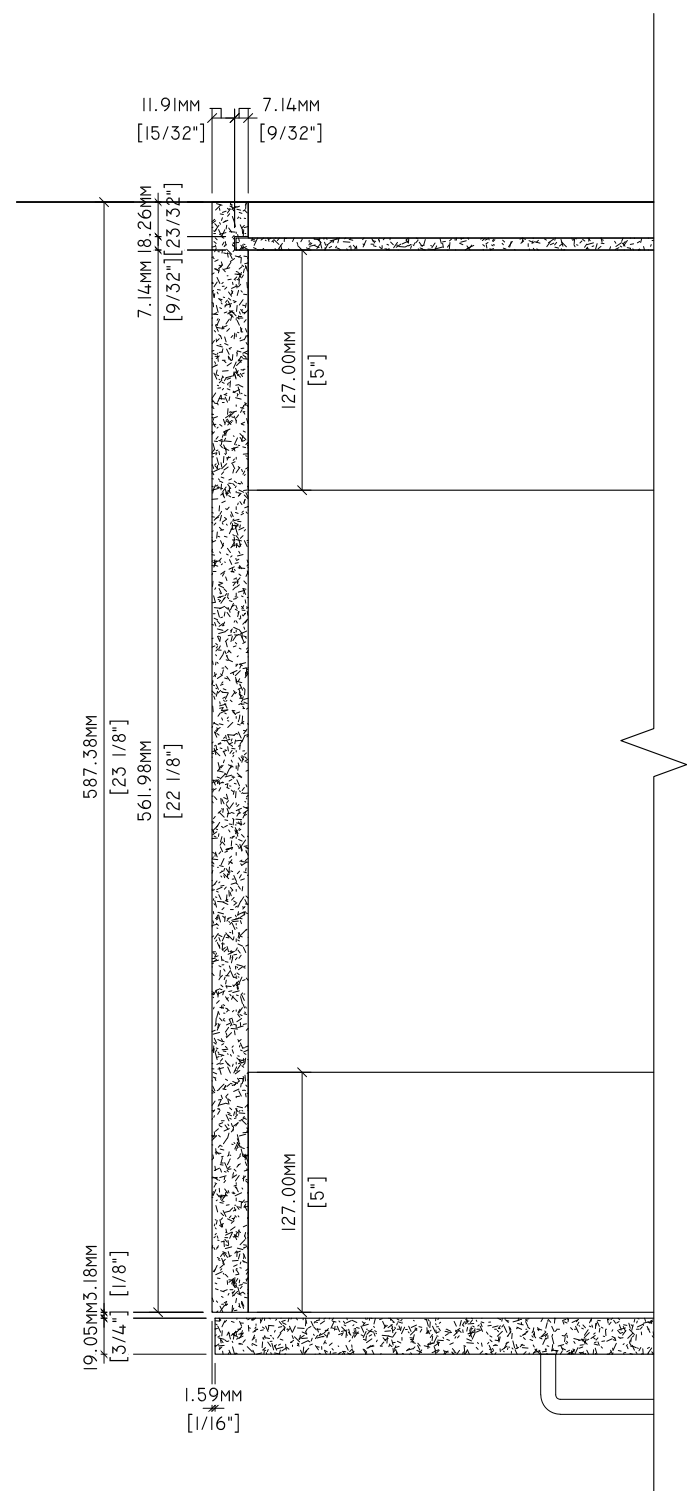
1
B-2.3

DETAIL
6" = 1'-0"

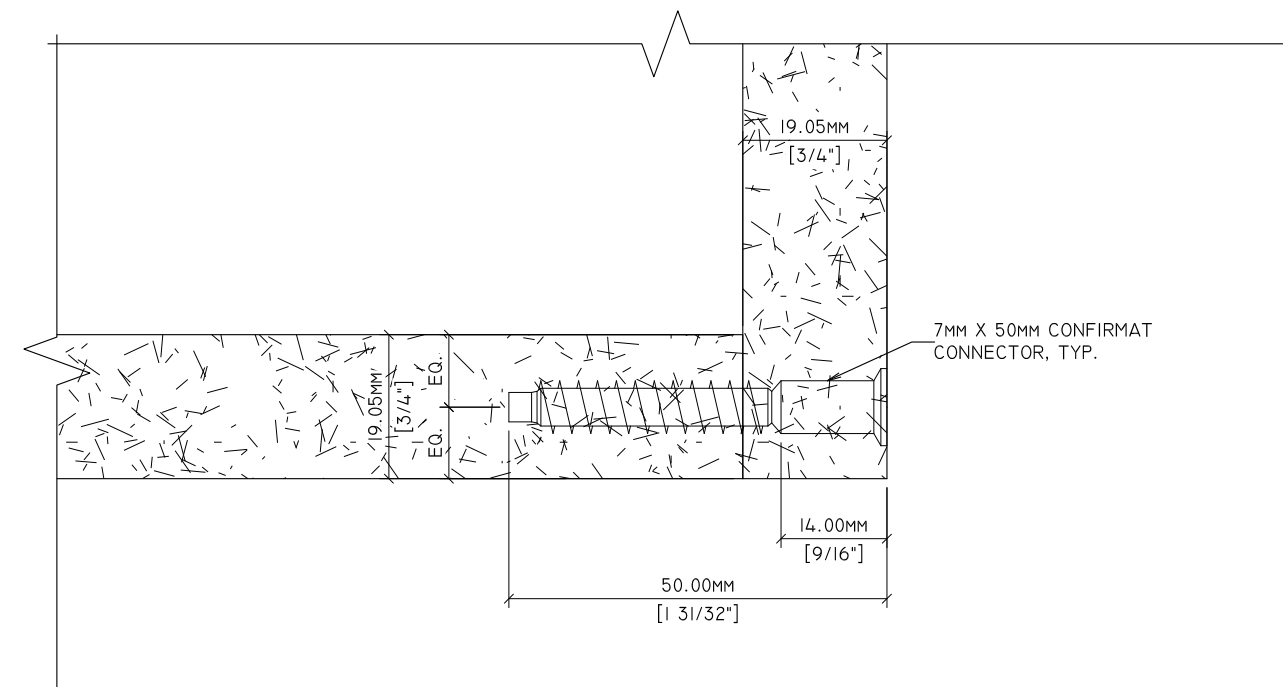


Standards Development and Performance Testing
 1310 Southerfield Road
 Americus, GA 31709

Drawn By:	HD	REVISIONS		SPECIMEN DWG. NO.: B-2.3
Reviewed By:	-	△1	-	JOINERY METHOD NO.: 7mm X 50mm CONFIRMAT
Revised By:	HKM	△2	- 7/7/2020	SPECIMEN MATERIAL: MDF, PB, VC
Revised By:		△3	-	BATCH QUANTITY: -
Approved By:	-	△4	-	SCALE: AS NOTED



1 PLAN DETAIL
B-2.4 3" = 1'-0"



2 DETAIL
B-2.4 12" = 1'-0"

Drawn By:	HD	REVISIONS		SPECIMEN DWG. NO.: B-2.4
Reviewed By:	-	△1	-	JOINERY METHOD NO.: 7mm X 50mm CONFIRMAT
Revised By:	HKM	△2	- 7/7/2020	SPECIMEN MATERIAL: MDF, PB, VC
Revised By:		△3	-	BATCH QUANTITY: -
Approved By:	-	△4	-	SCALE: AS NOTED