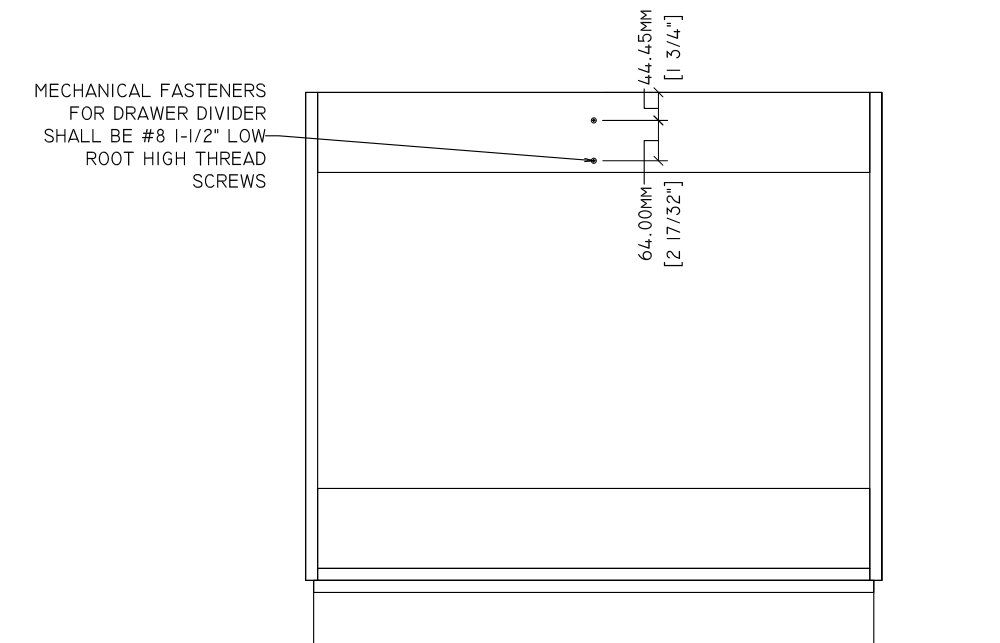
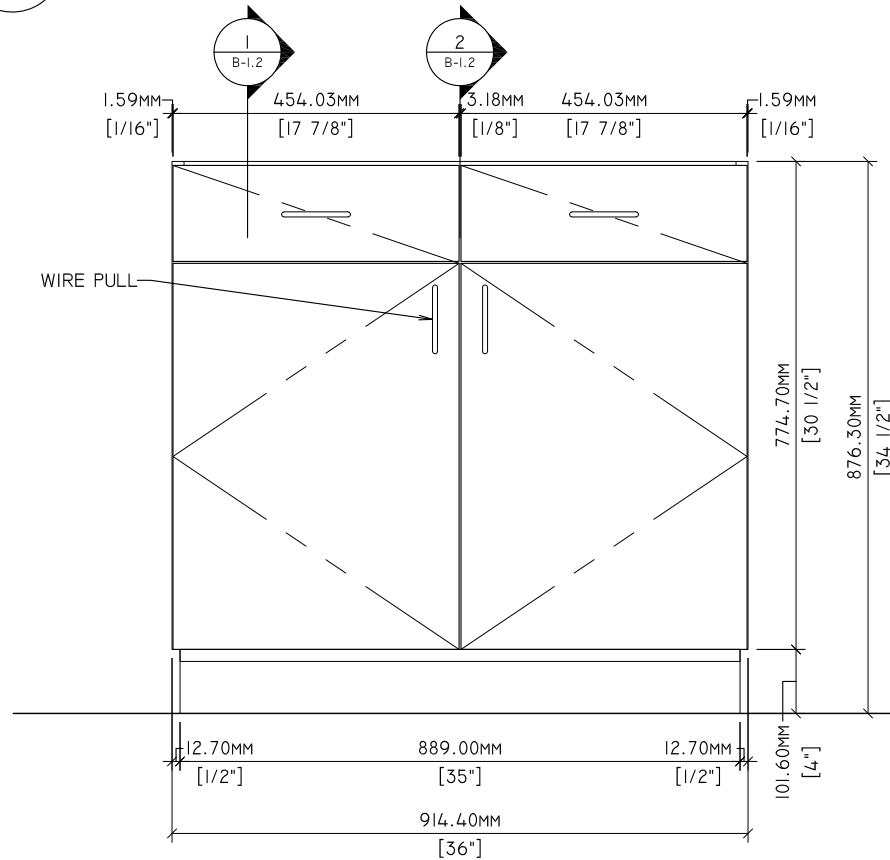
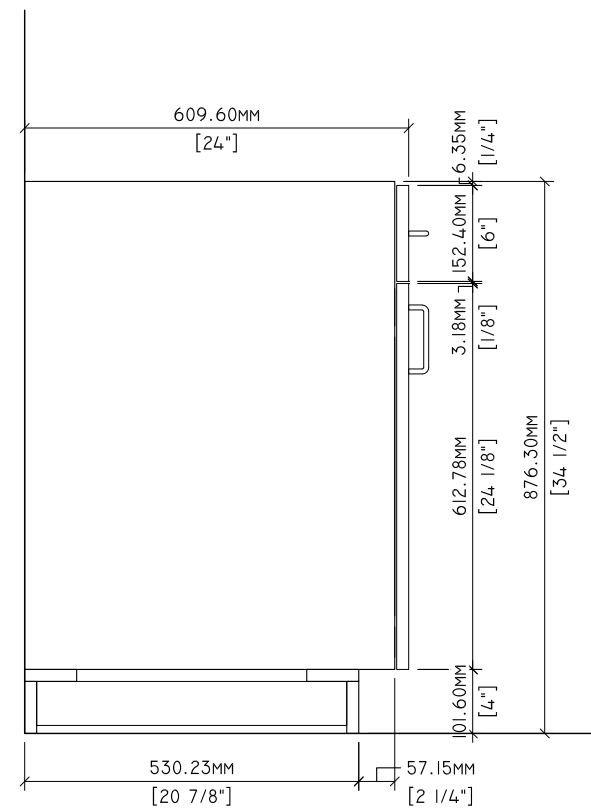
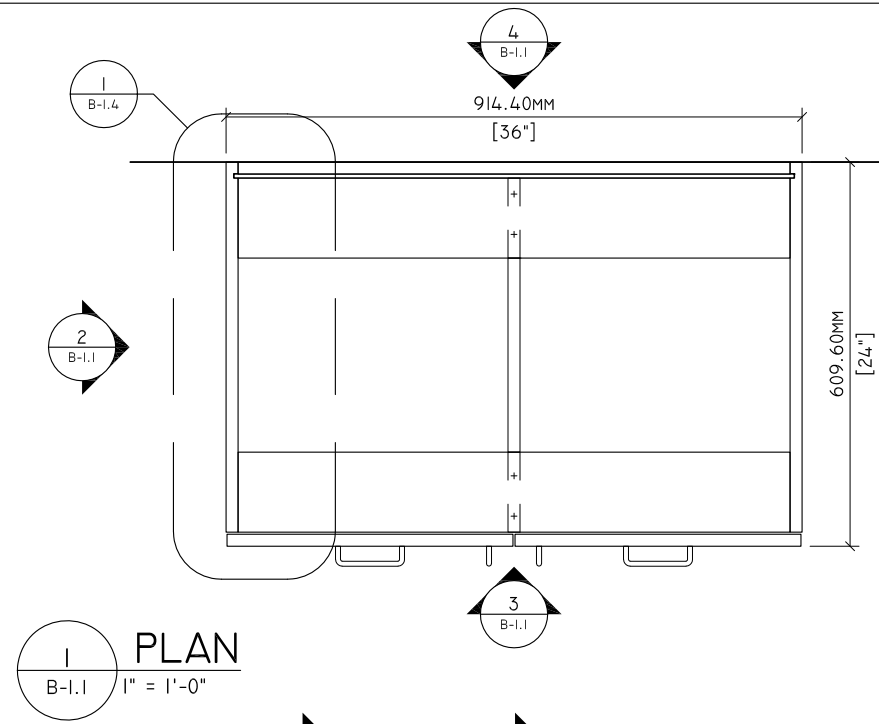
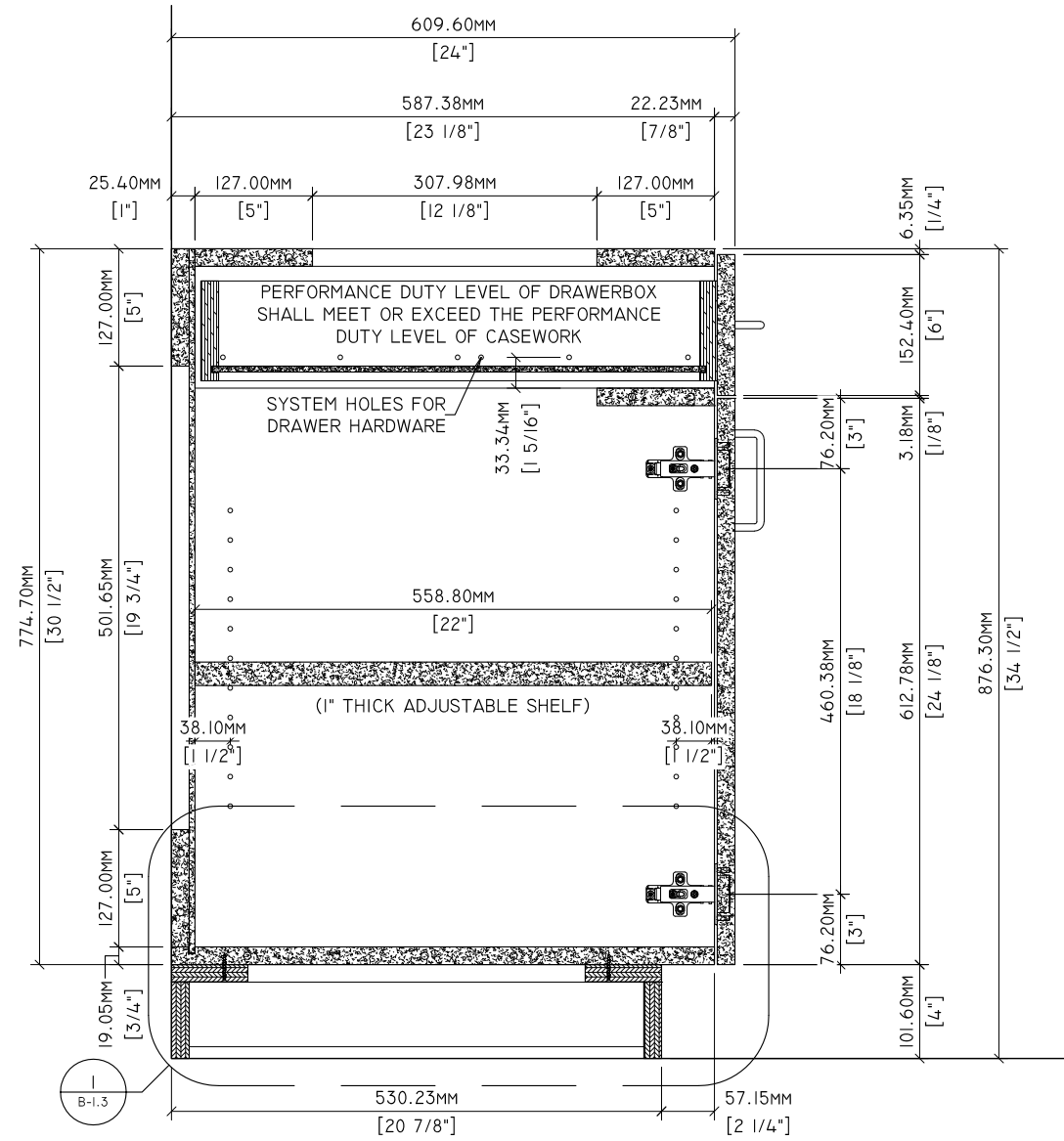


MATERIAL NOTES

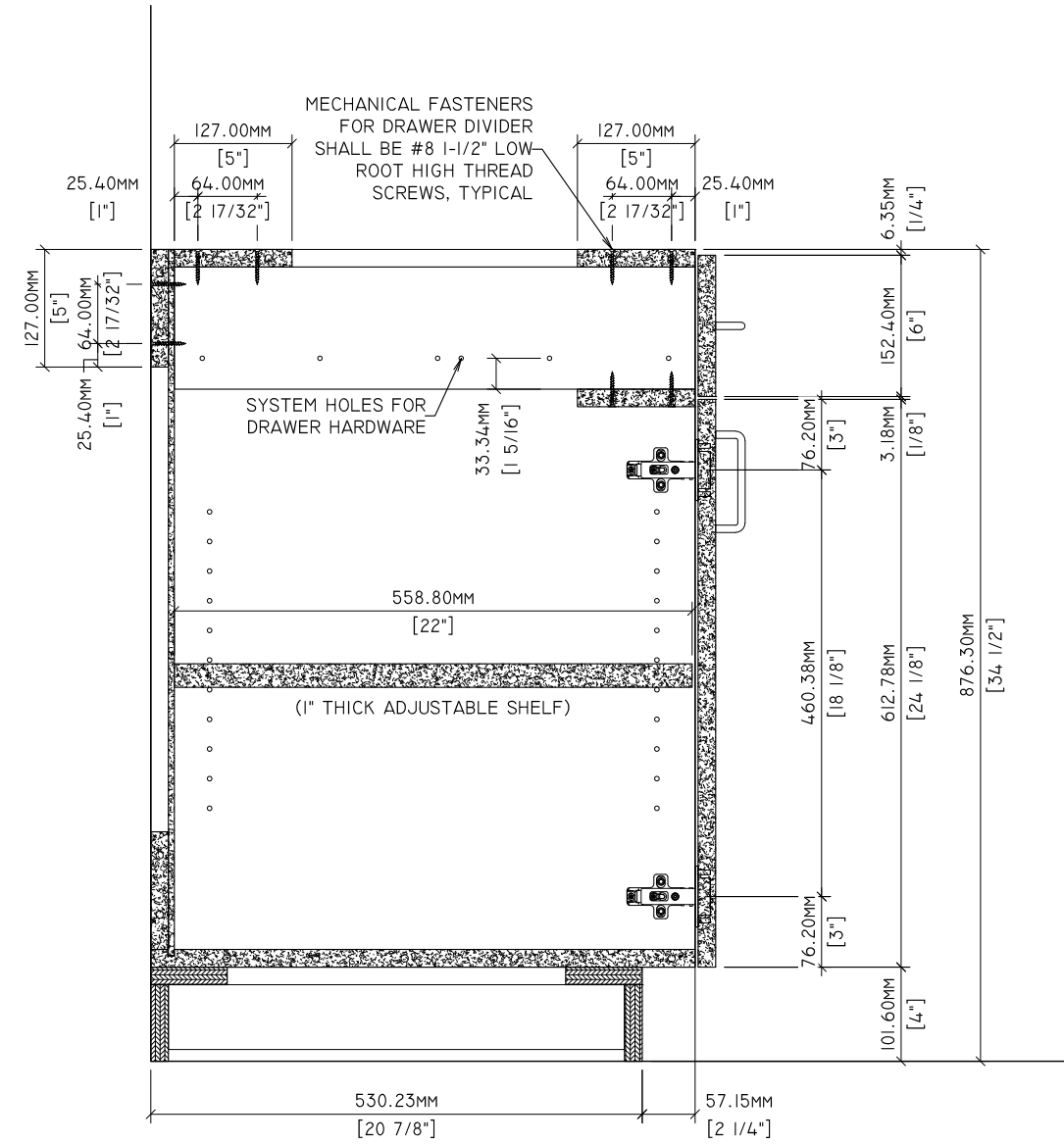
THE FOLLOWING ENGINEERING DRAWINGS ILLUSTRATE THE TESTED ENGINEERING OF DOWELED CONSTRUCTION BASE CABINETS USING GRADE 130 MDF, M-2 PARTICLEBOARD, AND VENEER CORE PLYWOOD. THESE DRAWINGS DO NOT INDICATE COMPLIANCE WITH AWI STANDARD. MANUFACTURERS SHALL ACQUIRE AN OFFICIAL AWI TEST REPORT IN ORDER TO INDICATE COMPLIANCE.



Drawn By:	HD	REVISIONS		SPECIMEN DWG. NO.: B-1.1
Reviewed By:	-	△1	-	JOINERY METHOD NO.: 8MM DOWEL
Revised By:	-HKM	△2	- 7/7/2020	SPECIMEN MATERIAL: MDF, PB, VC
Revised By:	-	△3	-	BATCH QUANTITY: -
Approved By:	-	△4	-	SCALE: AS NOTED

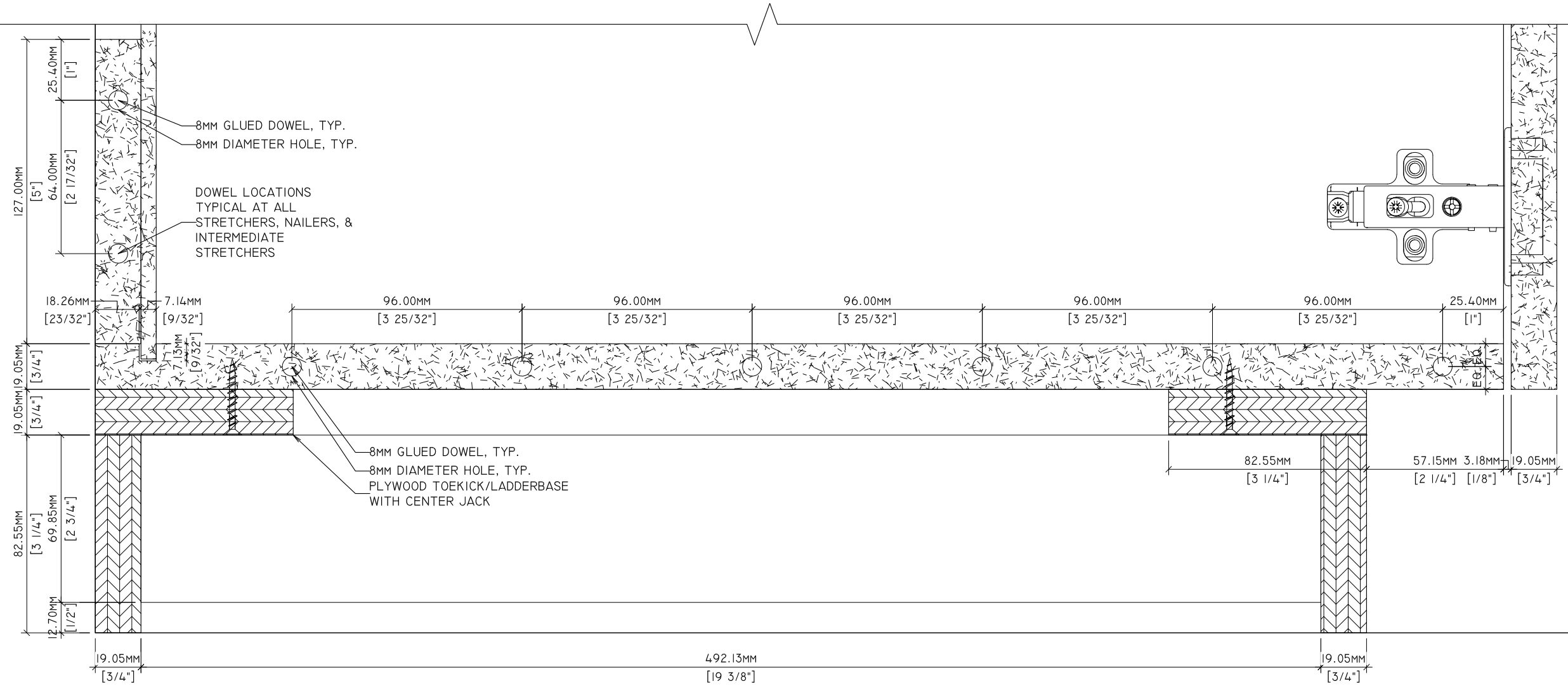


1 SECTION
B-1.2 1-1/2" = 1'-0"



2 SECTION: DRAWER DIVIDER FASTENER LOCATIONS
B-1.2 1-1/2" = 1'-0"

Drawn By:	HD	REVISIONS		SPECIMEN DWG. NO.: B-1.2
Reviewed By:	-	△1	-	JOINERY METHOD NO.: 8MM DOWEL
Revised By:	HKM	△2	- 7/7/2020	SPECIMEN MATERIAL: MDF, PB, VC
Revised By:	-	△3	-	BATCH QUANTITY: -
Approved By:	-	△4	-	SCALE: AS NOTED

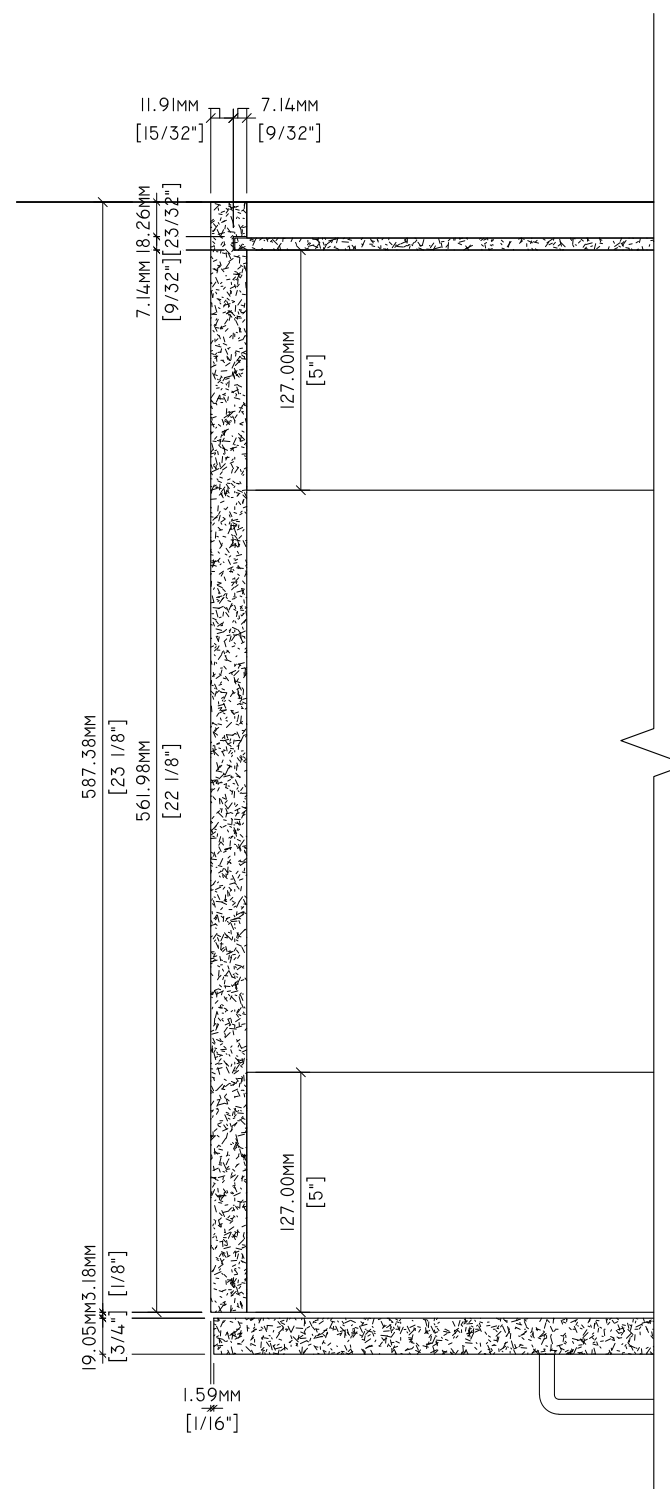


1 DETAIL
 B-1.3 6" = 1'-0"

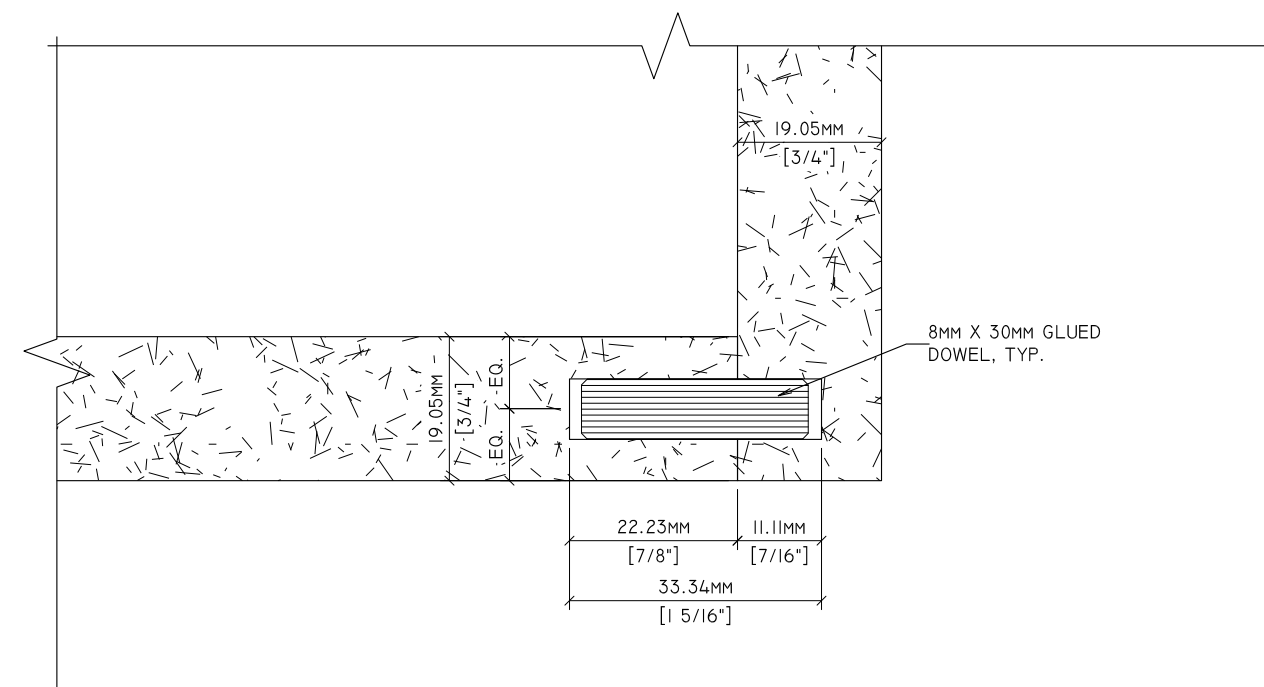


Standards Development and Performance Testing
 1310 Southerfield Road
 Americus, GA 31709

Drawn By:	HD	REVISIONS		SPECIMEN DWG. NO.: B-1.3
Reviewed By:	-	△1	-	JOINERY METHOD NO.: 8MM DOWEL
Revised By:	HKM	△2	- 7/7/2020	SPECIMEN MATERIAL: MDF, PB, VC
Revised By:		△3	-	BATCH QUANTITY: -
Approved By:	-	△4	-	SCALE: AS NOTED



1 PLAN DETAIL
B-1.4 3" = 1'-0"



2 DETAIL
B-1.4 12" = 1'-0"



Standards Development and Performance Testing
1310 Southerfield Road
Americus, GA 31709

Drawn By:	HD	REVISIONS		SPECIMEN DWG. NO.: B-1.4
Reviewed By:	-	△1	-	JOINERY METHOD NO.: 8MM DOWEL
Revised By:	HKM	△2	- 7/7/2020	SPECIMEN MATERIAL: MDF, PB, VC
Revised By:		△3	-	BATCH QUANTITY: -
Approved By:	-	△4	-	SCALE: AS NOTED