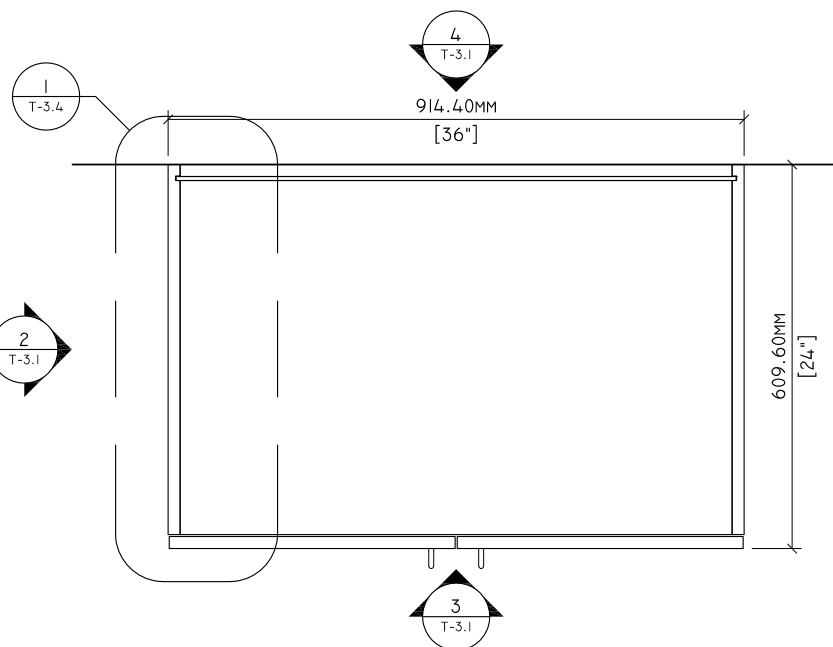


MATERIAL NOTES

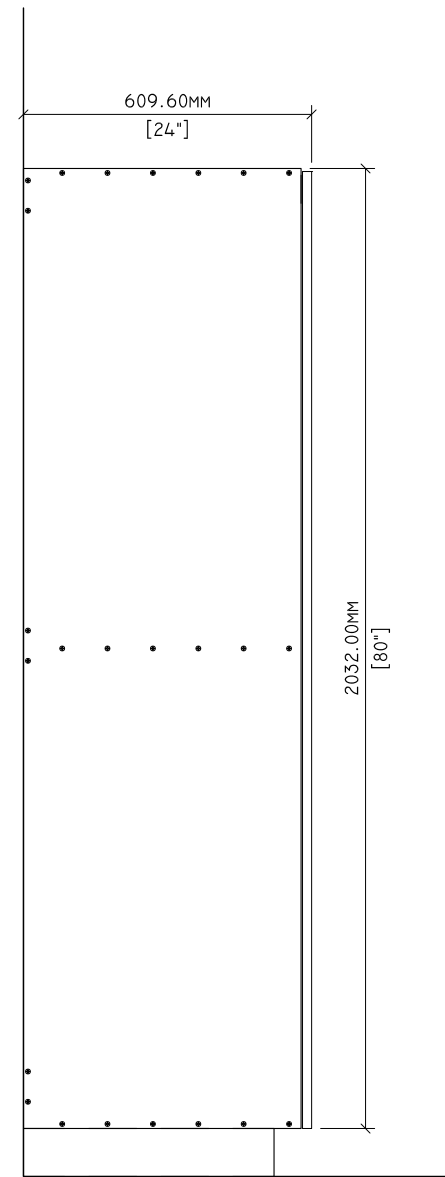
THE FOLLOWING ENGINEERING DRAWINGS ILLUSTRATE THE TESTED ENGINEERING OF DOWELED CONSTRUCTION BASE CABINETS USING M-2 PARTICLEBOARD CORE TFL (2-SIDE). THESE DRAWINGS DO NOT INDICATE COMPLIANCE WITH AWI STANDARDS. MANUFACTURERS SHALL ACQUIRE AN OFFICIAL AWI TEST REPORT IN ORDER TO INDICATE COMPLIANCE.

ENGINEERING NOTES

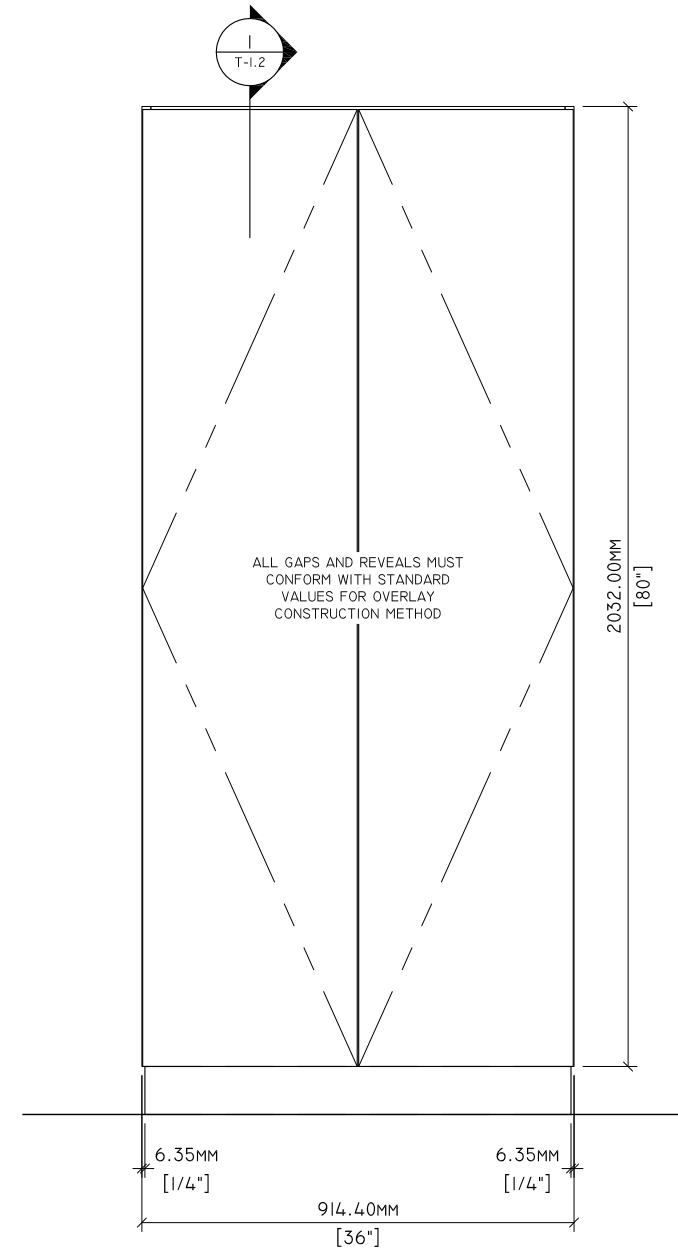
- CABINET SIZE AND CONFIGURATION MAY BE ALTERED AS LONG AS JOINERY, SPACING, AND LOCATION REQUIREMENTS ARE FOLLOWED.
- ALL JOINERY SHALL MEET THE TOLERANCES OF AWI STANDARDS.
- DOWELS SHALL BE 8MM X 30MM.
- CONSTRUCTION ILLUSTRATED HEREIN IS CONFORMING FOR ALL FRAMELESS DOOR AND DRAWER OVERLAYS.
- NAILERS MAY ALLOW FOR A TOLERANCE OF +/- 1.6MM [$\frac{1}{16}$ "] IN THE 127.00MM [5"] WIDTH.



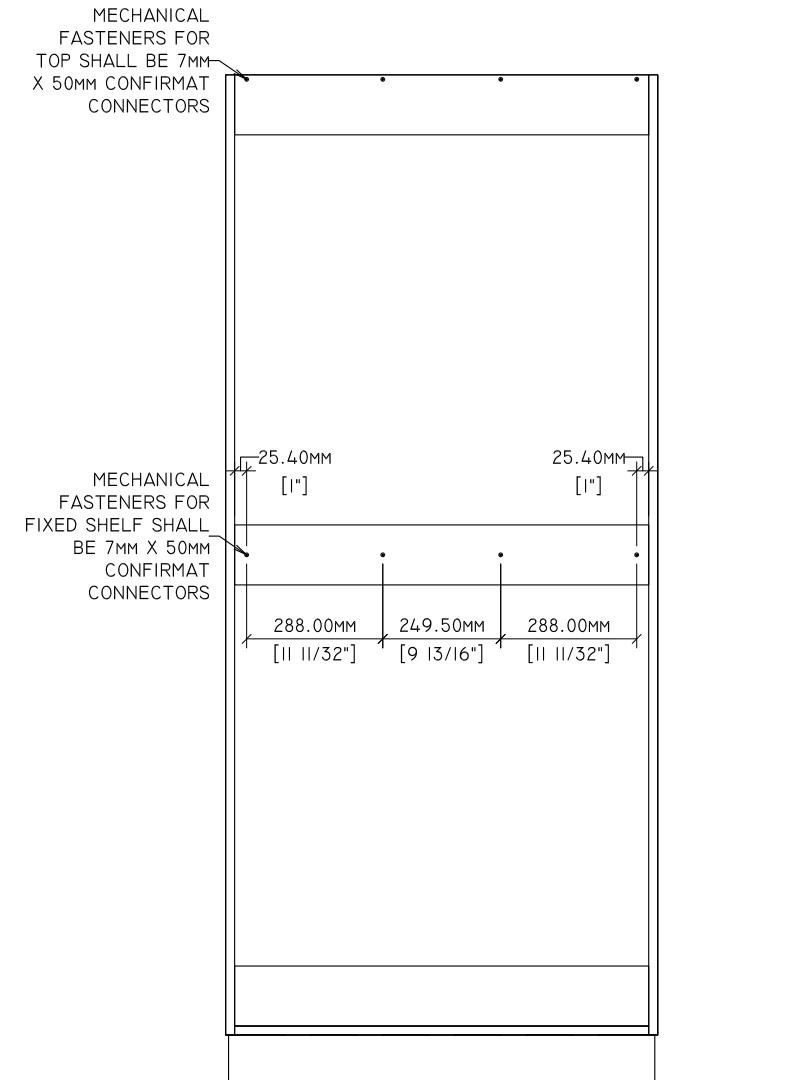
1 PLAN
T-3.1 1" = 1'-0"



2 SIDE ELEVATION
T-3.1 3/4" = 1'-0"



3 ELEVATION
T-3.1 3/4" = 1'-0"

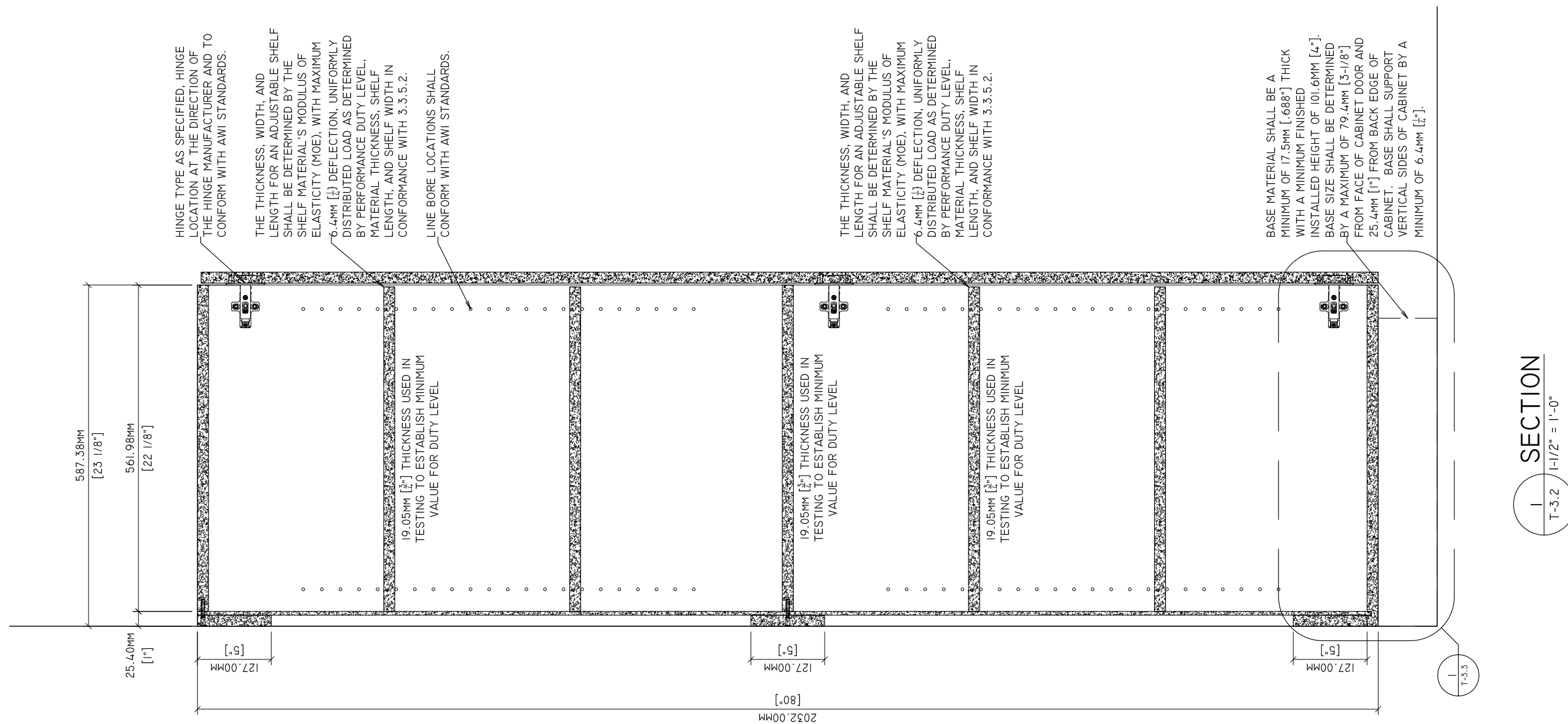


4 BACK ELEVATION
T-3.1 3/4" = 1'-0"



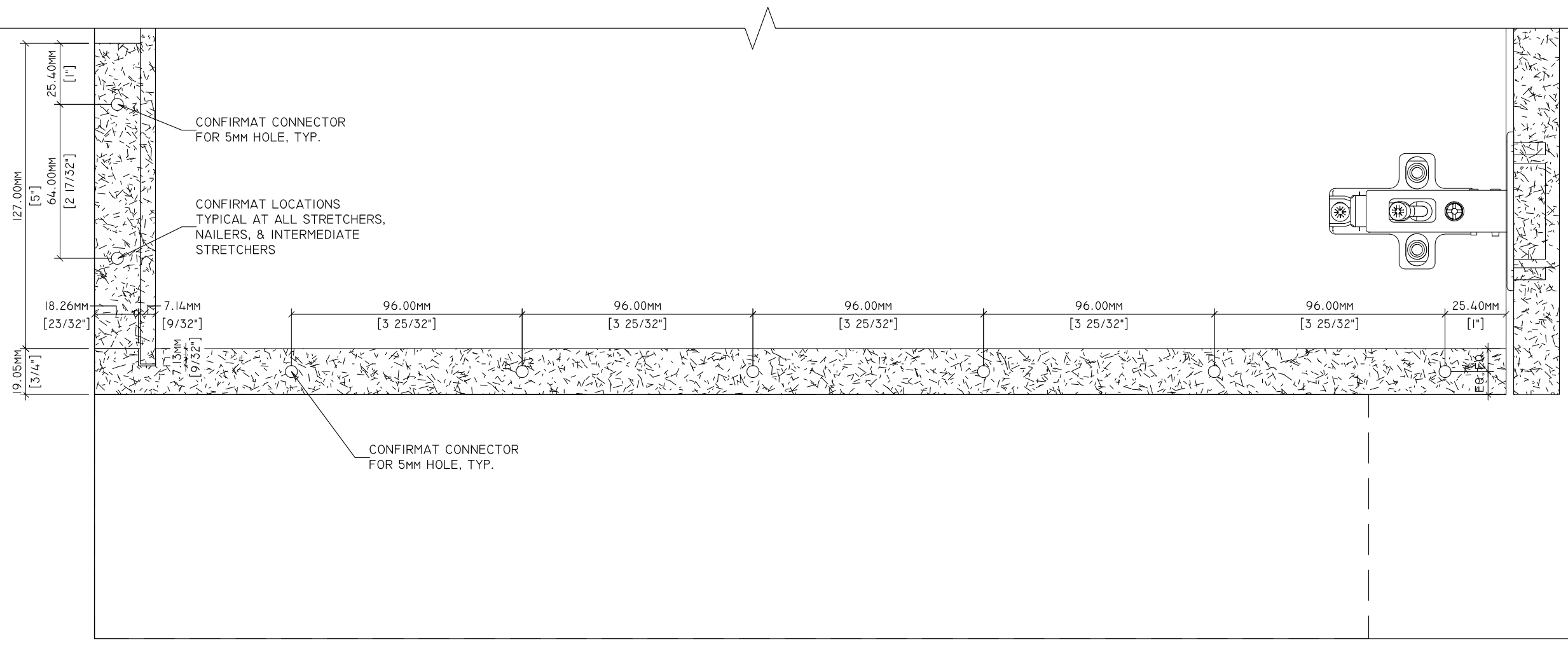
Standards Development and Performance Testing
1310 Southerfield Road
Americus, GA 31709

Drawn By:	HD	REVISIONS		SPECIMEN DWG. NO.: T-3.1
Reviewed By:	-	△1	-	JOINERY METHOD NO.: 7mm X 50mm CONFIRMAT
Revised By:	HKM	△2	7/7/2020	SPECIMEN MATERIAL: PB
Revised By:	HKM	△3	7/9/2021	BATCH QUANTITY: -
Approved By:	-	△4	-	SCALE: AS NOTED



Standards Development and Performance Testing
1310 Southerfield Road
Americus, GA 31709

Drawn By:	HD	REVISIONS		SPECIMEN DWG. NO.: T-3.2
Reviewed By:	-	△1	-	JOINERY METHOD NO.: 7mm X 50mm CONFIRMAT
Revised By:	HKM	△2	7/7/2020	SPECIMEN MATERIAL: PB
Revised By:	HKM	△3	7/9/2021	BATCH QUANTITY: -
Approved By:	-	△4	-	SCALE: AS NOTED



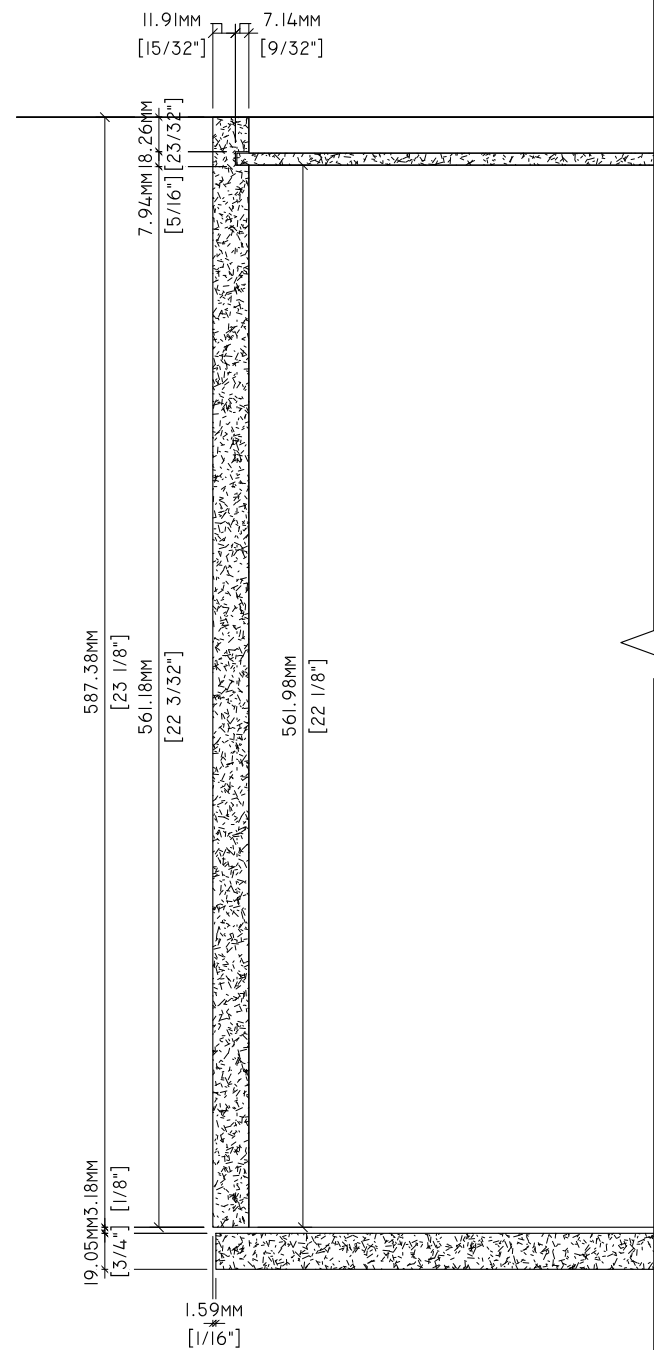
1
T-3.3

DETAIL
6" = 1'-0"

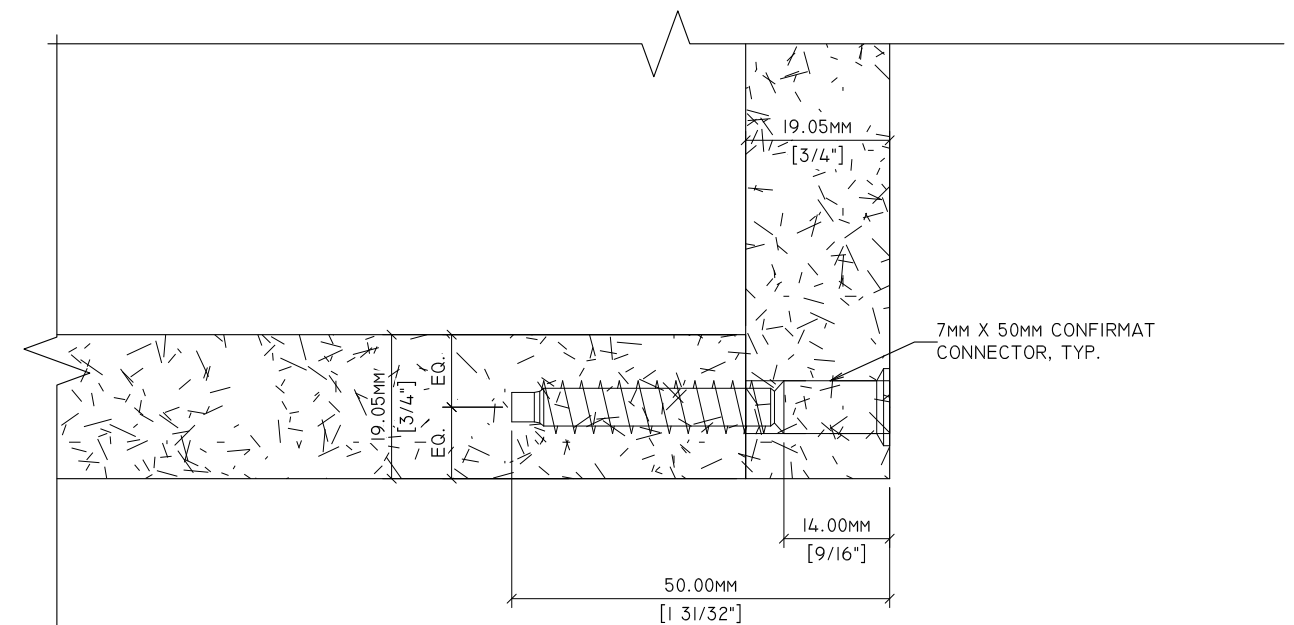


Standards Development and Performance Testing
 1310 Southerfield Road
 Americus, GA 31709

Drawn By:	HD	REVISIONS		SPECIMEN DWG. NO.: T-3.3
Reviewed By:	-	△1	-	JOINERY METHOD NO.: 7mm X 50mm CONFIRMAT
Revised By:	HKM	△2	7/7/2020	SPECIMEN MATERIAL: PB
Revised By:	HKM	△3	7/9/2021	BATCH QUANTITY: -
Approved By:	-	△4	-	SCALE: AS NOTED



1 PLAN DETAIL
T-3.4 3" = 1'-0"



2 DETAIL
T-3.4 12" = 1'-0"

Drawn By:		REVISIONS		SPECIMEN DWG. NO.:
Drawn By:	HD			T-3.4
Reviewed By:	-	1	-	JOINERY METHOD NO.: 7mm X 50mm CONFIRMAT
Revised By:	HKM	2	7/7/2020	SPECIMEN MATERIAL: PB
Revised By:	HKM	3	7/9/2021	BATCH QUANTITY: -
Approved By:	-	4	-	SCALE: AS NOTED