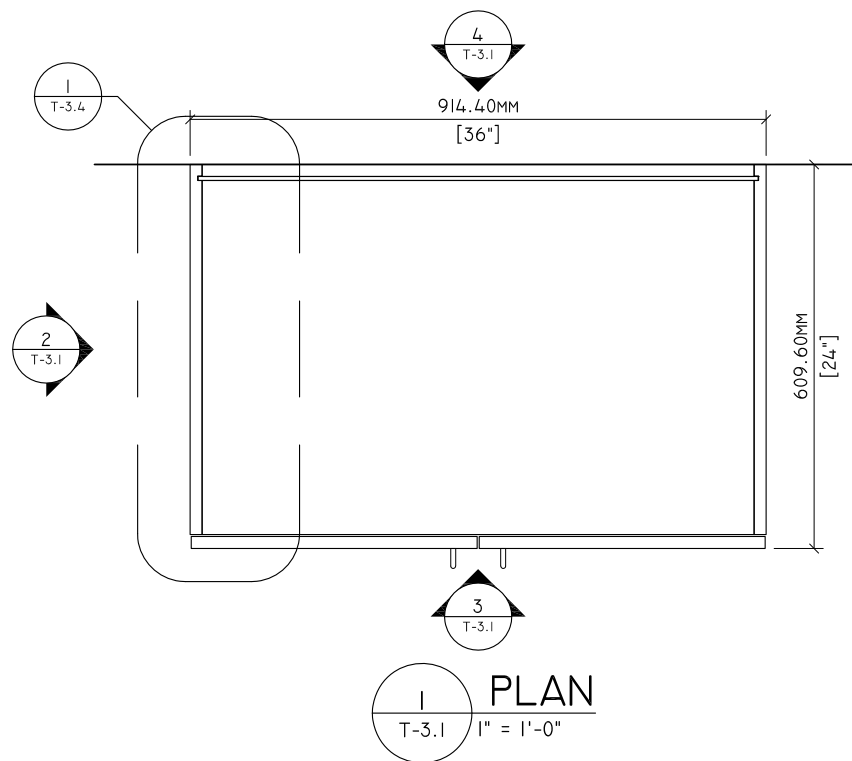
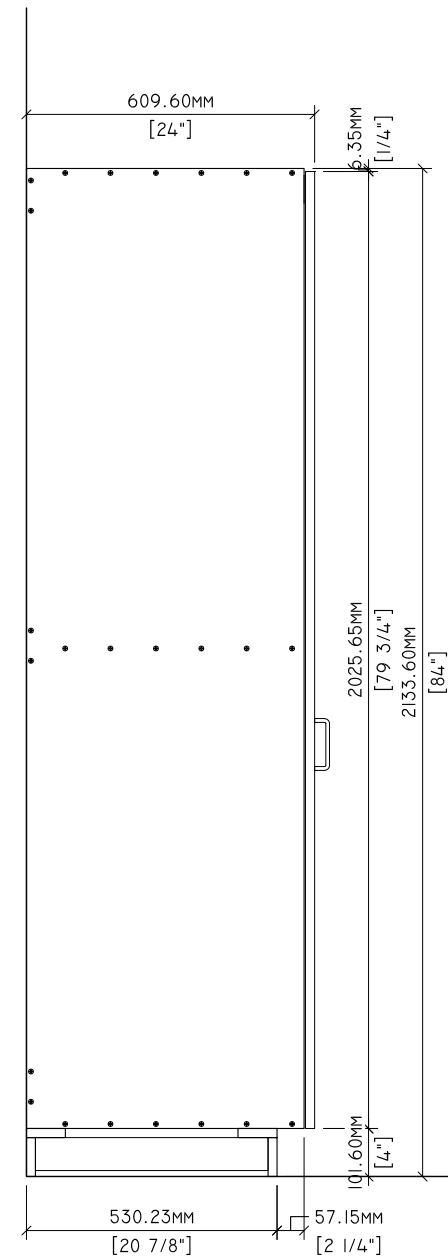


MATERIAL NOTES

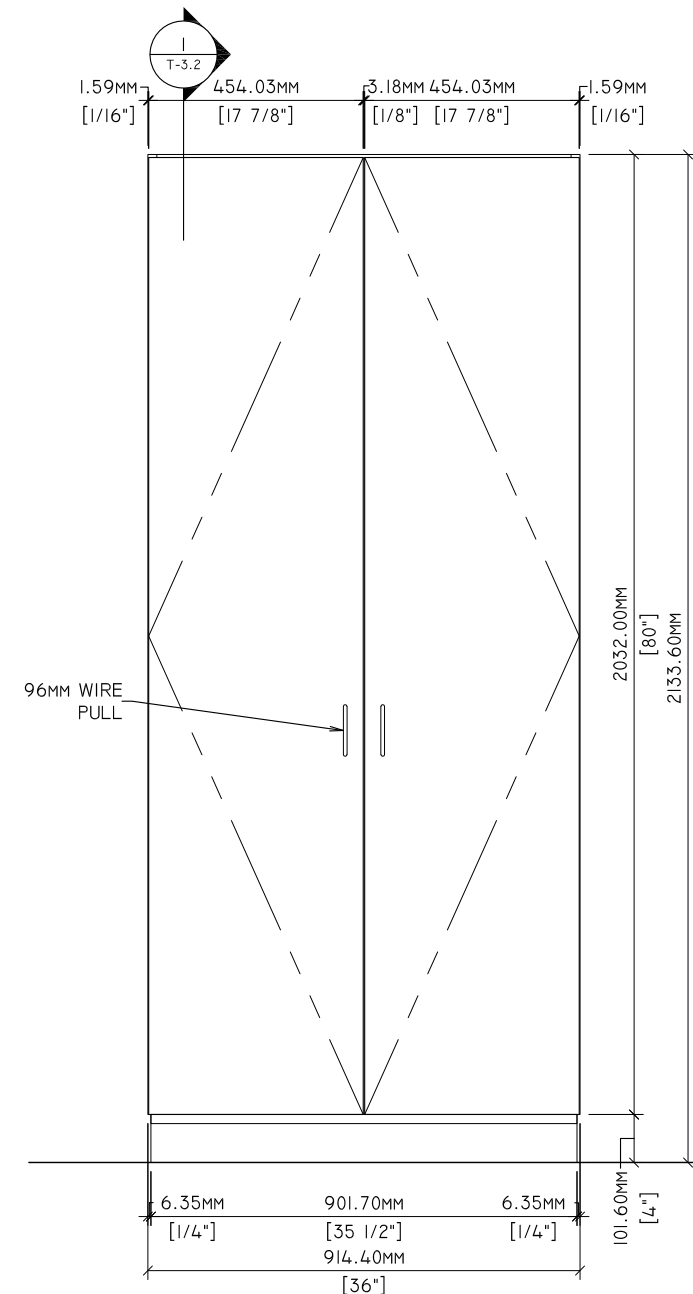
THE FOLLOWING ENGINEERING DRAWINGS ILLUSTRATE THE TESTED ENGINEERING OF CONFIRMAT CONSTRUCTION TALL CABINETS USING M-2 PARTICLEBOARD. THESE DRAWINGS DO NOT INDICATE COMPLIANCE WITH AWI STANDARD. MANUFACTURERS SHALL ACQUIRE AN OFFICIAL AWI TEST REPORT IN ORDER TO INDICATE COMPLIANCE.



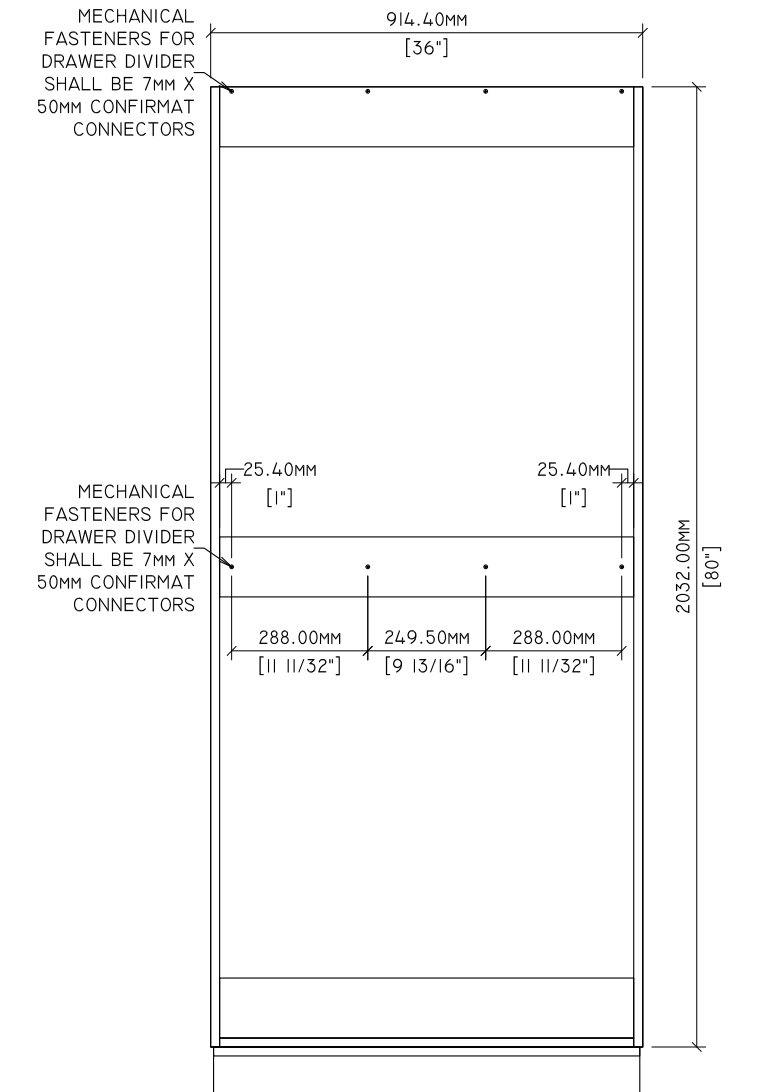
1 PLAN
T-3.1 1" = 1'-0"



2 SIDE ELEVATION
T-3.1 3/4" = 1'-0"

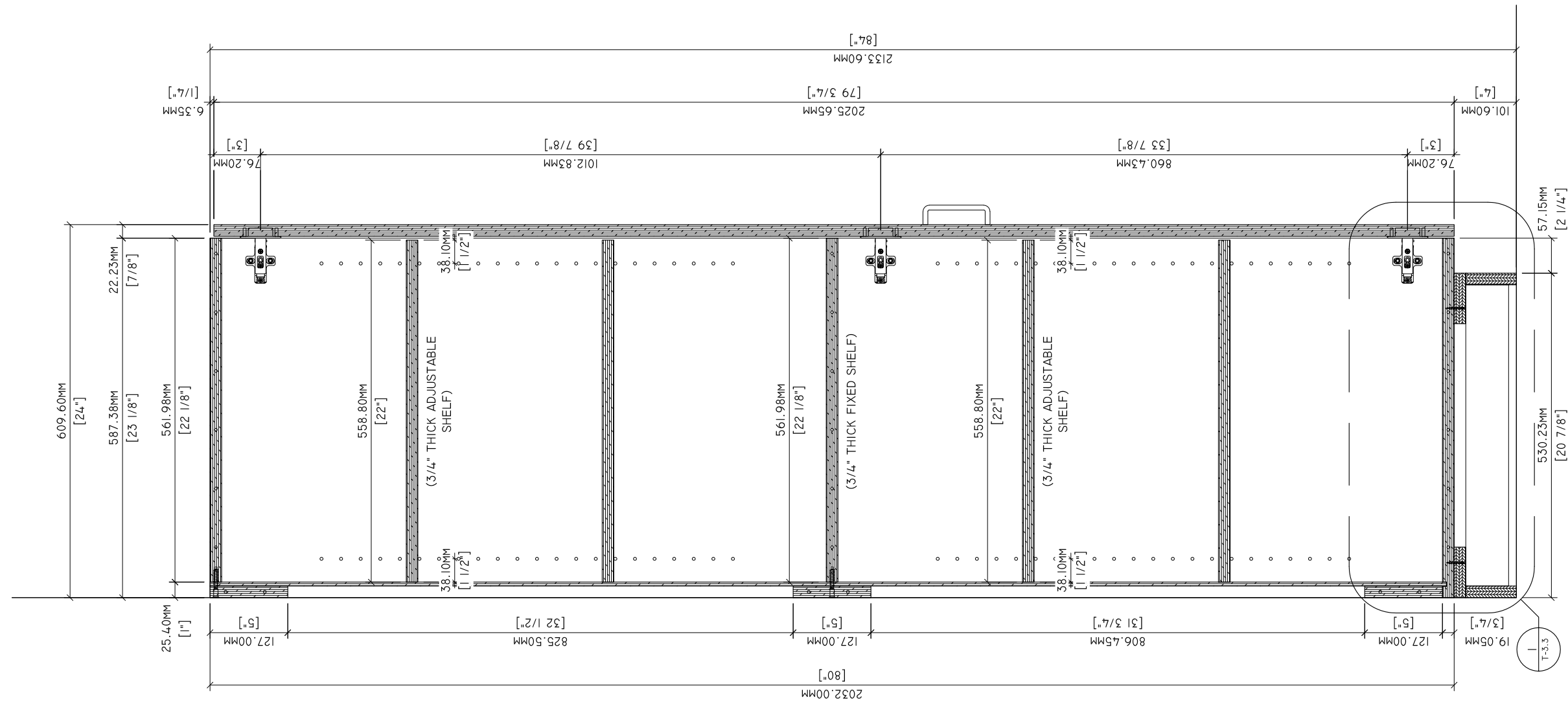


3 ELEVATION
T-3.1 3/4" = 1'-0"



4 BACK ELEVATION
T-3.1 3/4" = 1'-0"

Drawn By:		REVISIONS		SPECIMEN DWG. NO.:
Drawn By:	HD			T-3.1
Reviewed By:	-	△	-	JOINERY METHOD NO.: 7mm X 50mm CONFIRMAT
Revised By:	-HKM	△	- 7/7/2020	SPECIMEN MATERIAL: PARTICLEBOARD CORE
Revised By:	-	△	-	BATCH QUANTITY: -
Approved By:	-	△	-	SCALE: AS NOTED

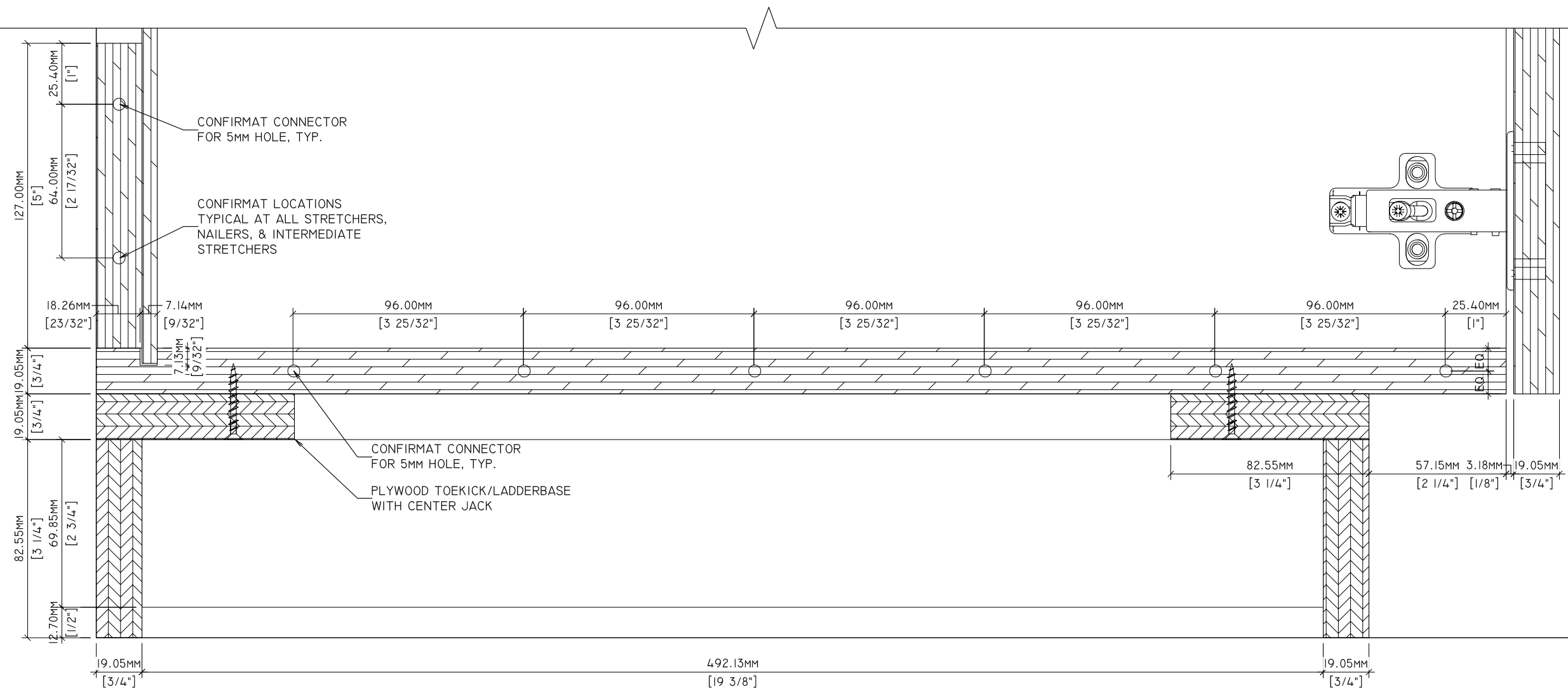


SECTION
T-3.2 1-1/2" = 1'-0"



Standards Development and Performance Testing
1310 Southerfield Road
Americus, GA 31709

Drawn By:	HD	REVISIONS		SPECIMEN DWG. NO.: T-3.2
Reviewed By:	-	△1	-	JOINERY METHOD NO.: 7mm X 50mm CONFIRMAT
Revised By:	HKM	△2	- 7/7/2020	SPECIMEN MATERIAL: PARTICLEBOARD CORE
Revised By:	-	△3	-	BATCH QUANTITY: -
Approved By:	-	△4	-	SCALE: AS NOTED



1
T-3.3

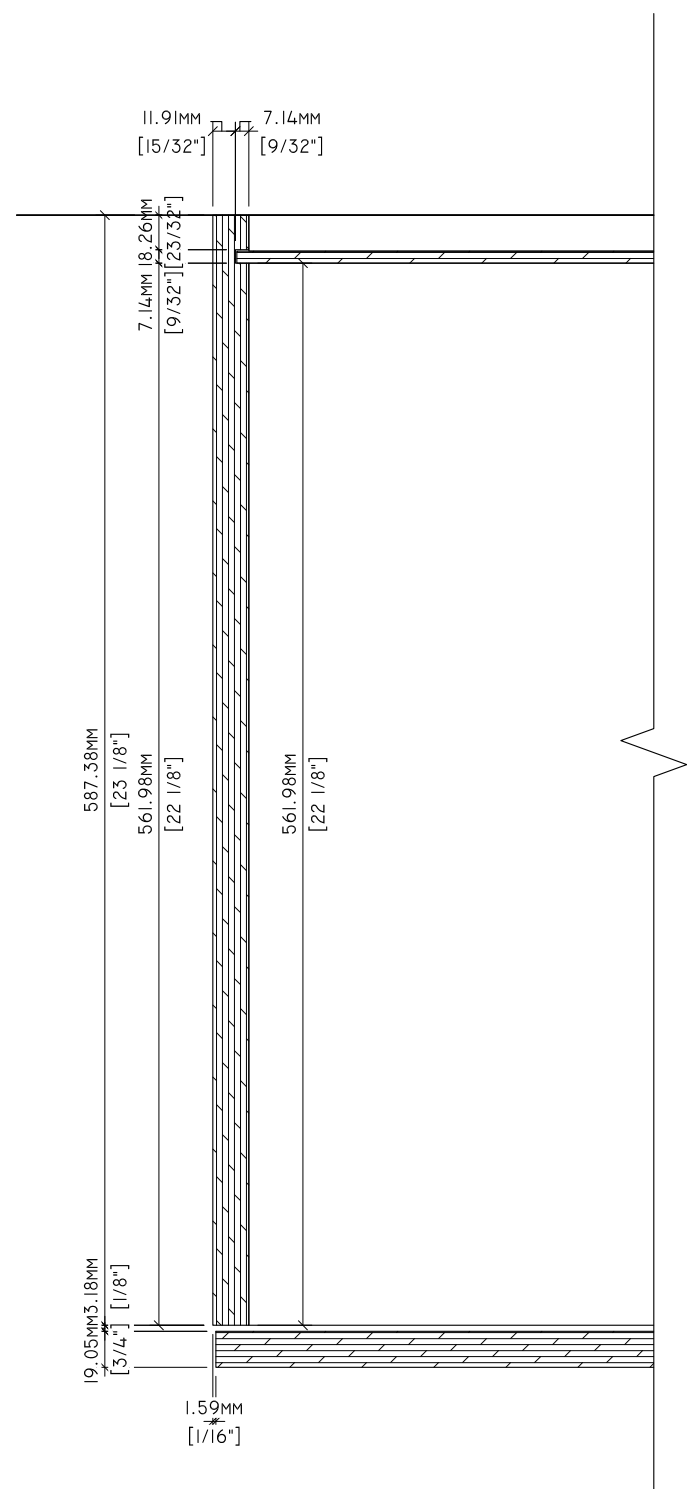
DETAIL

6" = 1'-0"

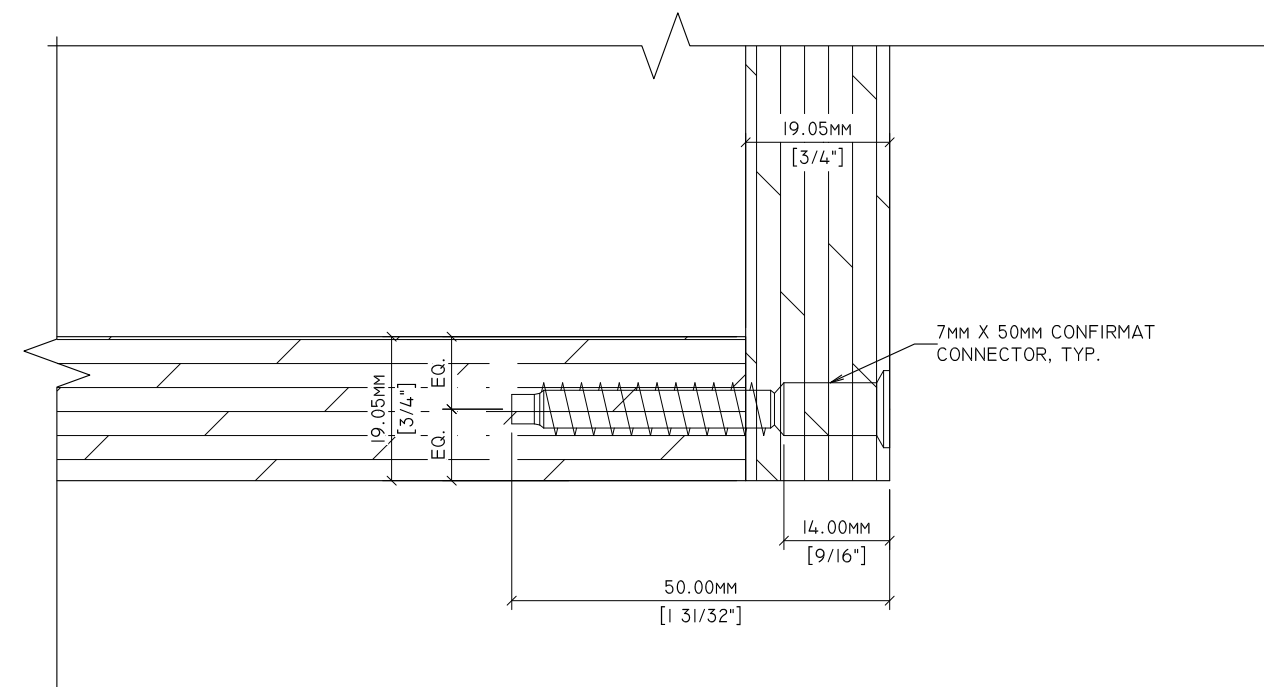


Standards Development and Performance Testing
 1310 Southerfield Road
 Americus, GA 31709

Drawn By:		REVISIONS		SPECIMEN DWG. NO.:
Drawn By:	HD			T-3.3
Reviewed By:	-	1	-	JOINERY METHOD NO.: 7mm X 50mm CONFIRMAT
Revised By:	HKM	2	- 7/7/2020	SPECIMEN MATERIAL: PARTICLEBOARD CORE
Revised By:		3	-	BATCH QUANTITY: -
Approved By:	-	4	-	SCALE: AS NOTED



1 PLAN DETAIL
T-3.4 3" = 1'-0"



2 DETAIL
T-3.4 12" = 1'-0"

Drawn By:	HD	REVISIONS		SPECIMEN DWG. NO.: T-3.4
Reviewed By:	-	△1	-	JOINERY METHOD NO.: 7mm X 50mm CONFIRMAT
Revised By:	HKM	△2	- 7/7/2020	SPECIMEN MATERIAL: PARTICLEBOARD CORE
Revised By:		△3	-	BATCH QUANTITY: -
Approved By:	-	△4	-	SCALE: AS NOTED