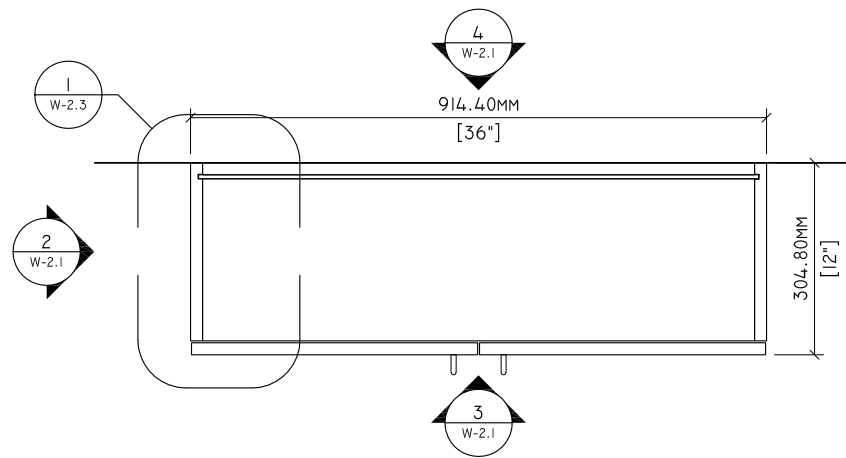
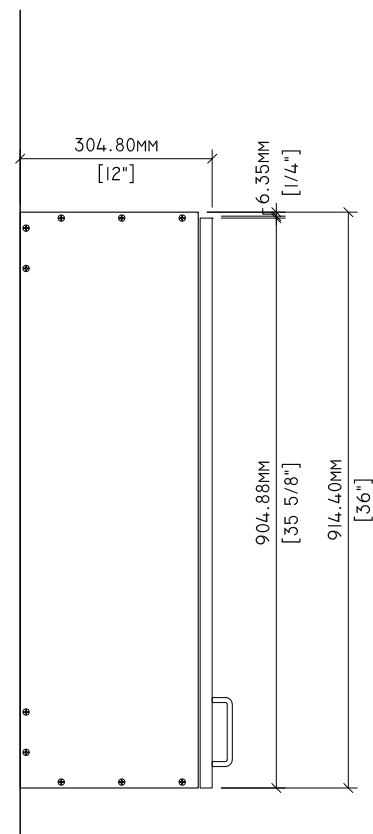


MATERIAL NOTES

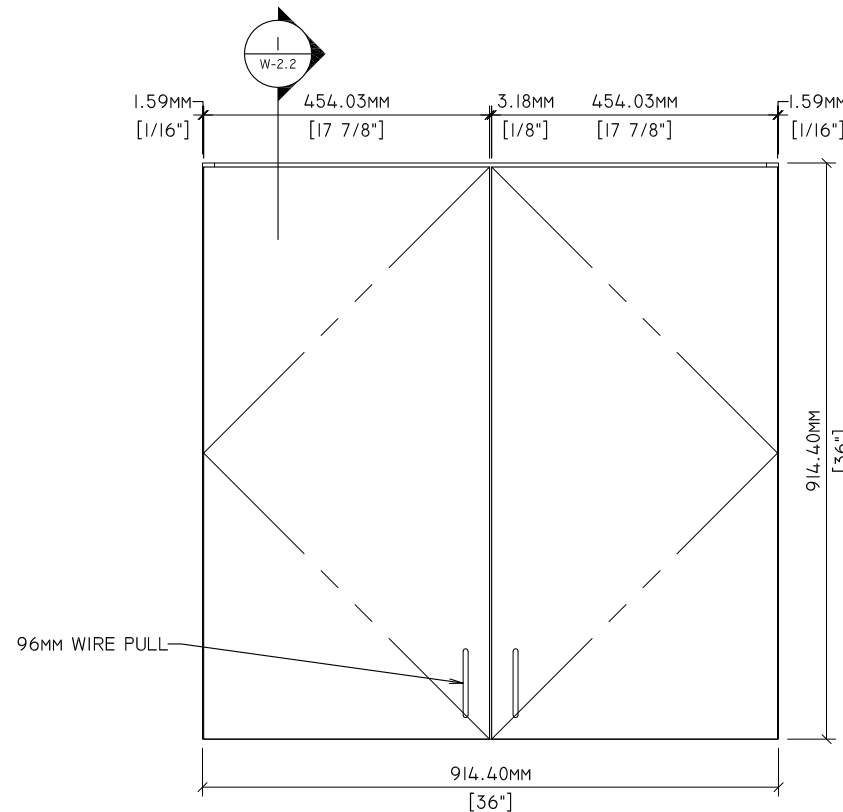
THE FOLLOWING ENGINEERING DRAWINGS ILLUSTRATE THE TESTED ENGINEERING OF CONFIRMAT CONSTRUCTION WALL CABINETS USING GRADE 130 MDF, M-2 PARTICLEBOARD, AND VENEER CORE PLYWOOD. THESE DRAWINGS DO NOT INDICATE COMPLIANCE WITH AWI STANDARD. MANUFACTURERS SHALL ACQUIRE AN OFFICIAL AWI TEST REPORT IN ORDER TO INDICATE COMPLIANCE.



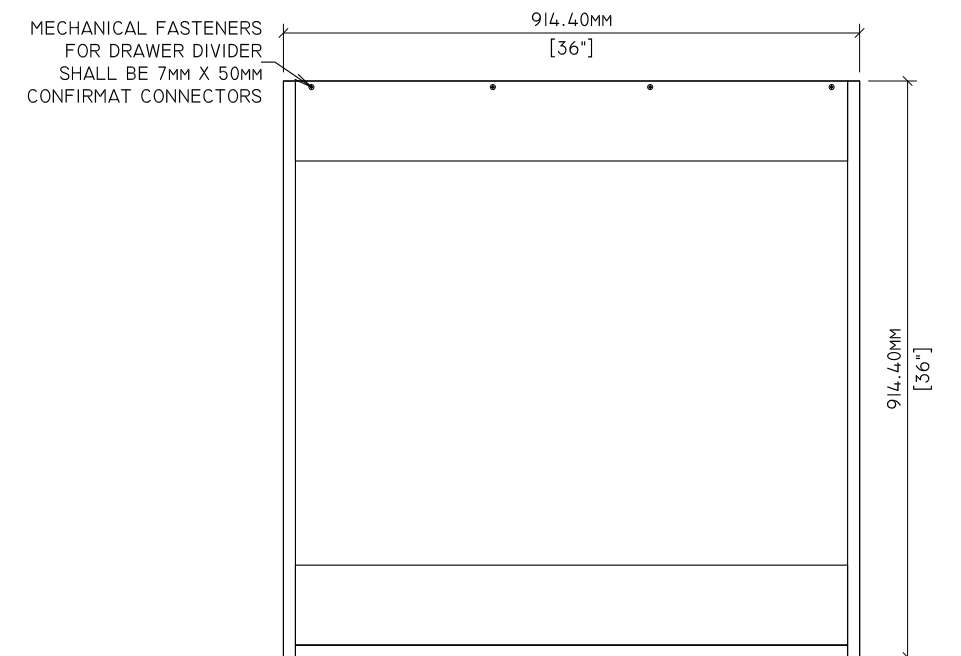
1 PLAN
W-2.1 1" = 1'-0"



2 SIDE ELEVATION
W-2.1 1" = 1'-0"

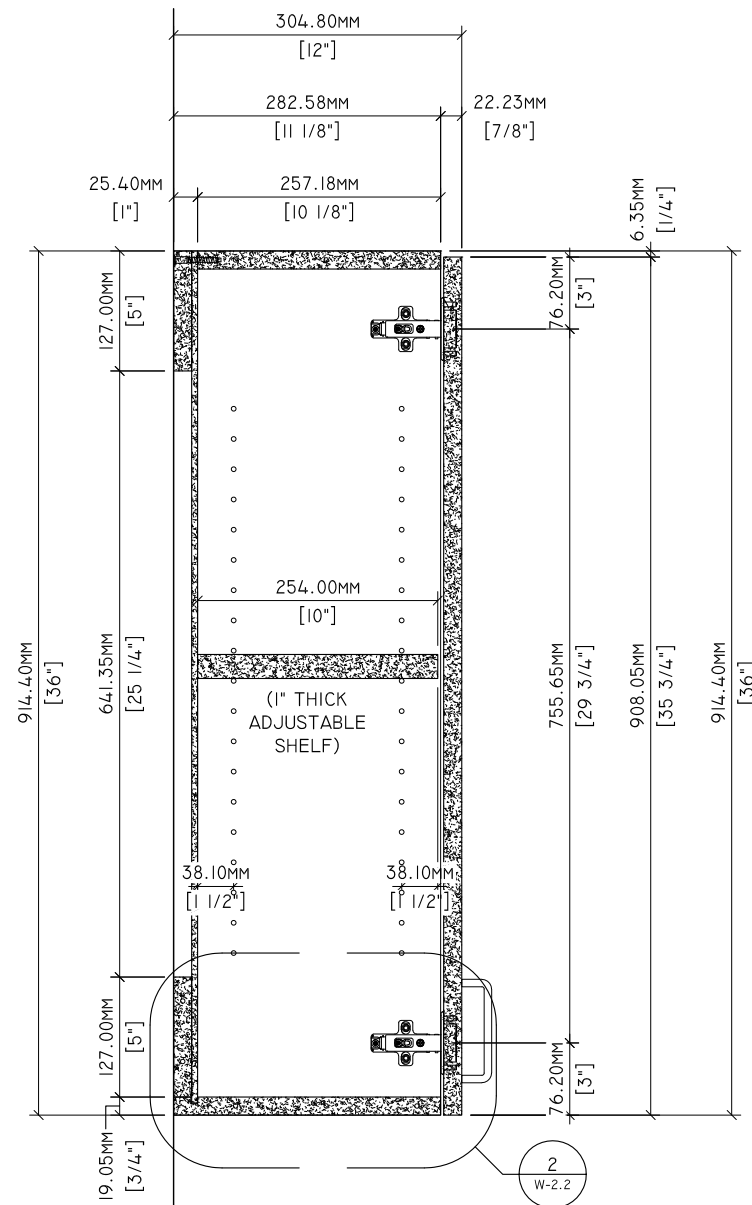


3 ELEVATION
W-2.1 1" = 1'-0"

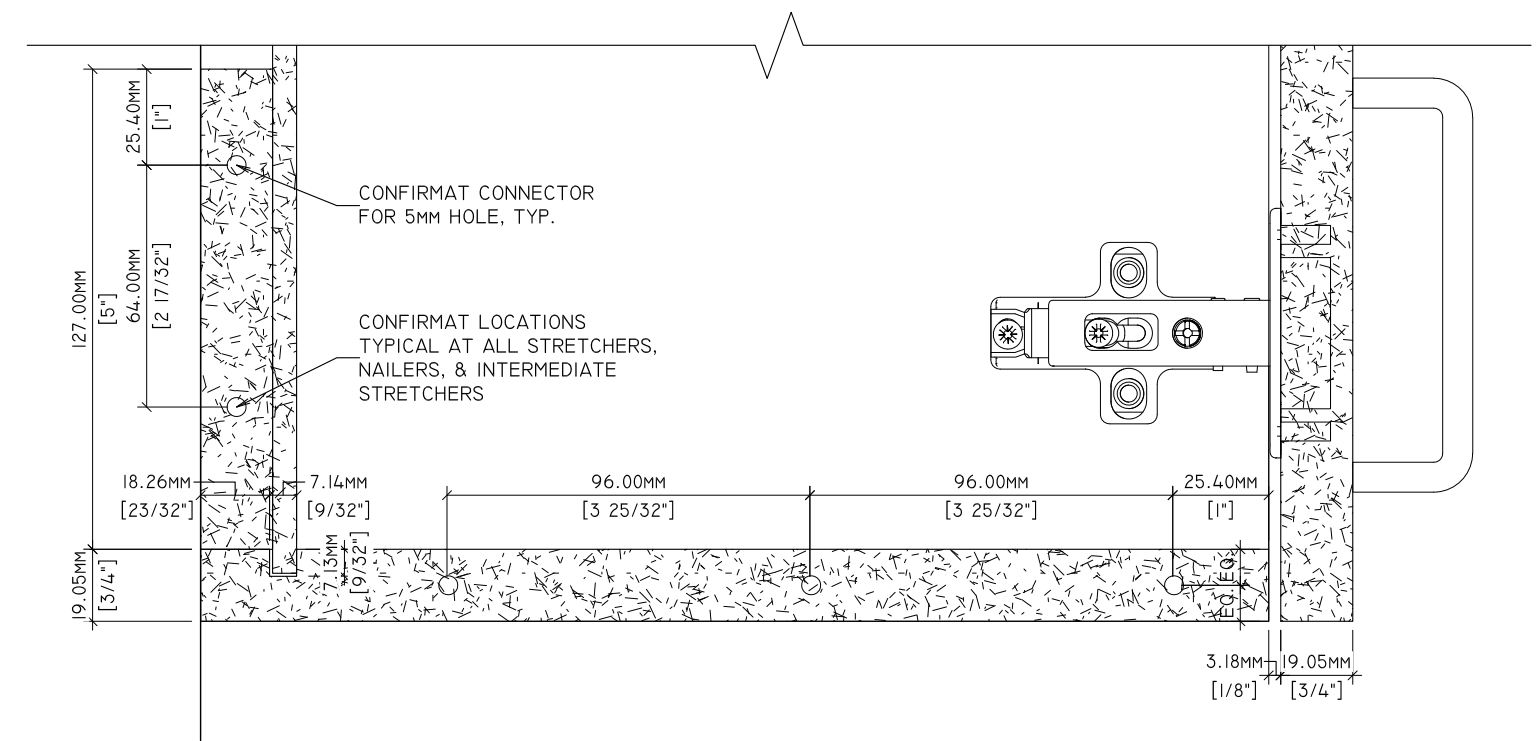


4 BACK ELEVATION
W-2.1 1" = 1'-0"

| Drawn By: | | REVISIONS | | SPECIMEN DWG. NO.: W-2.1 |
|--------------|------|-----------|------------|------------------------------------------|
| Reviewed By: | - | △1 | - | JOINERY METHOD NO.: 7nn X 50mm CONFIRMAT |
| Revised By: | -HKM | △2 | - 7/7/2020 | SPECIMEN MATERIAL: MDF, PB, VC |
| Revised By: | - | △3 | - | BATCH QUANTITY: - |
| Approved By: | - | △4 | - | SCALE: AS NOTED |



1 SECTION
W-2.2 1-1/2" = 1'-0"

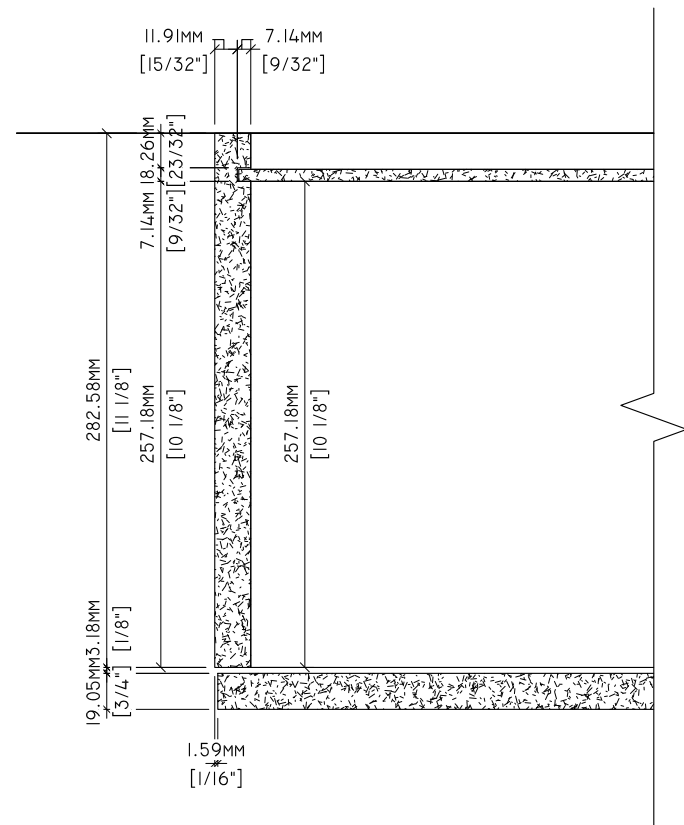


2 DETAIL
W-2.2 6" = 1'-0"

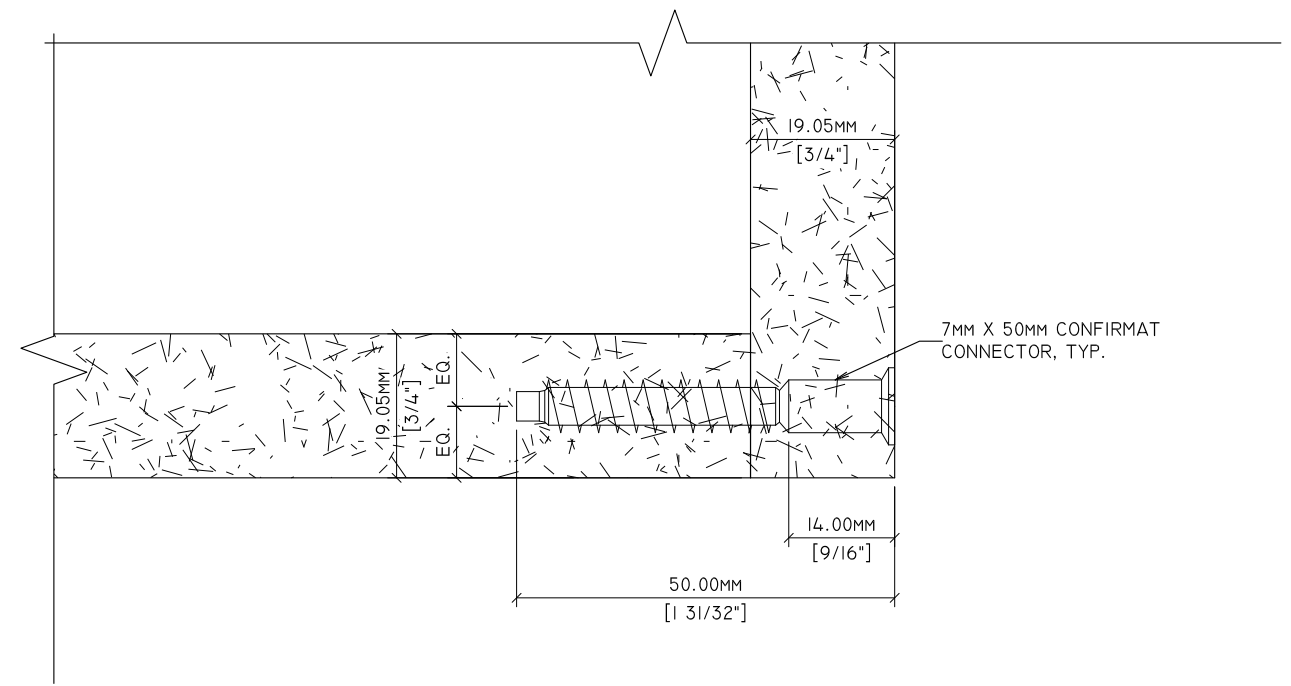


Standards Development and Performance Testing
1310 Southerfield Road
Americus, GA 31709

| | | | | |
|--------------|-----|------------------|------------|------------------------------------------|
| Drawn By: | HD | REVISIONS | | SPECIMEN DWG. NO.: W-2.2 |
| Reviewed By: | - | △1 | - | JOINERY METHOD NO.: 7mm X 50mm CONFIRMAT |
| Revised By: | HKM | △2 | - 7/7/2020 | SPECIMEN MATERIAL: MDF, PB, VC |
| Revised By: | - | △3 | - | BATCH QUANTITY: - |
| Approved By: | - | △4 | - | SCALE: AS NOTED |



1 PLAN DETAIL
W-2.3 3" = 1'-0"



2 DETAIL
W-2.3 12" = 1'-0"

| | | | | |
|--------------|-----|------------------|------------|------------------------------------------|
| Drawn By: | HD | REVISIONS | | SPECIMEN DWG. NO.: W-2.3 |
| Reviewed By: | - | △1 | - | JOINERY METHOD NO.: 7mm X 50mm CONFIRMAT |
| Revised By: | HKM | △2 | - 7/7/2020 | SPECIMEN MATERIAL: MDF, PB, VC |
| Revised By: | | △3 | - | BATCH QUANTITY: - |
| Approved By: | - | △4 | - | SCALE: AS NOTED |